

Feature Shelf & Covered Shelves/Decks

Covered Shelves & Decks:

- DL Style Shelves & SD Style Decks covered with fabric or plastic laminate
- Fabric Shelves are available without molding (wrap-around style) or with MR1 molding (pg 219)
- Laminate covered shelves & decks **MUST** include MR1 Molding
- **For pricing see section 200, pg 9-11**

EXAMPLE PART NO.

SD	4	13	MR1S
----	---	----	------

SD = SD Style Deck
4 = Width: 3' or 4'
13 = Depth: 13", 16", 19", 22", 25", 28", 31"

MR1S = Molding MR1_:
 Specify: "S" Satin, "G" Gold,
 "N" No Molding (fabric option only)

STANDARD FINISH:

LAX	PLT
-----	-----

LAX • Top covering
 • Optional FF6, FM5, FF8, FG3 fabrics
 • Optional Tier I & II laminates
PLT • Deck color
 • Optional Tier I & II colors

Covered Decks



Covered Shelves



EXAMPLE PART NO.

DL	4	10	MR1S
----	---	----	------

DL = DL Style Shelf
4 = Width: 3' or 4'
10 = Depth: 7", 10", 13", 15", 16", 17", 19", 20", 22", 25", 28", 31"

MR1S = Molding MR1_:
 Specify: "S" Satin or "G" Gold
 "N" No Molding (fabric option only)

STANDARD FINISH:

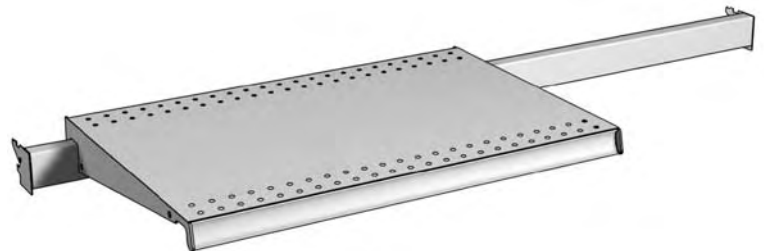
LAX	PLT
-----	-----

LAX • Top covering
 • Optional FF6, FM5, FF8, FG3 fabrics
 • Optional Tier I & II laminates
PLT • Shelf color
 • Optional Tier I & II colors

Feature Shelf & Shelf Bar:

- Feature Shelves install on 1"x2" tubular Feature Shelf Bar
- 1.235" Tag Molding & standard top perforation
- Uniformly distributed load of 75 lb.
- Order shelves & bars separately
- Overall projection matches standard shelves depth
- **For pricing see section 200, pg 10**

Feature Shelf & Shelf Bar



Feature Shelf

EXAMPLE CATALOG NO.

FS	2	13	N
----	---	----	---

FS = Feature Shelf
2 = Width: 24"
13 = Depth: 13" or 16"
N = No Molding

STANDARD FINISH:

PLT

• Optional Tier I & II colors

48"W Feature Shelf Bar

PART NO.
FSB48

STANDARD FINISH:

PLT

• Optional Tier I & II colors