



# HEAVY DUTY DISPLAY GONDOLA SHELVING AND SOLUTIONS

Durable solutions for heavy duty merchandising





# HEAVY DUTY GONDOLA



Durable solutions for heavy duty merchandising

Lozier is proud to introduce our Heavy Duty Gondola system. This system provides an increased unbalanced load capacity for those areas of your store that require merchandising heavy product on one side of the gondola, and light merchandise on the opposite side.

## HEAVY DUTY

### HD DISPLAY SHELVING

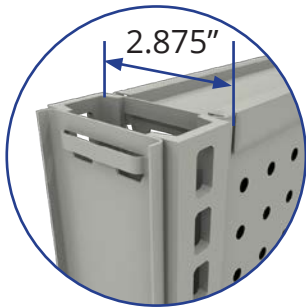
- For customers with high demand for storing and merchandising heavy products on one side of the gondola.
- Increases unbalanced loading.



# HEAVY DUTY GONDOLA



Durable solutions for heavy duty merchandising



## HD Uprites: UH\_

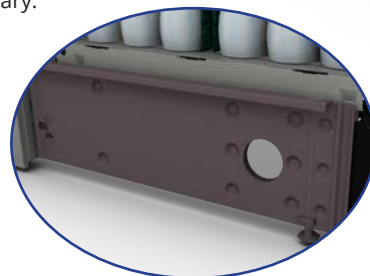
- Deeper Uprite for added unbalanced load rating.

## Actual System Capacities:

- HD 06 base: 20,000 in lbs
- HD LB: 18,000 in lbs
- Standard 06 12,000 in lbs
- Standard Low base: 15,000 in lbs

## HD BASE BRACKETS: BBH\_06/LB

- Stabilizes heavier loaded sections to allow less deflection.
- 28" and 31" Base Brackets are designed as Heavy Duty, so the BBH designation for these sizes are not necessary.





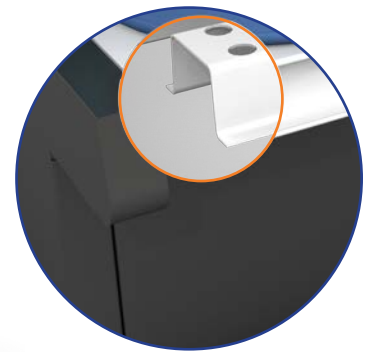
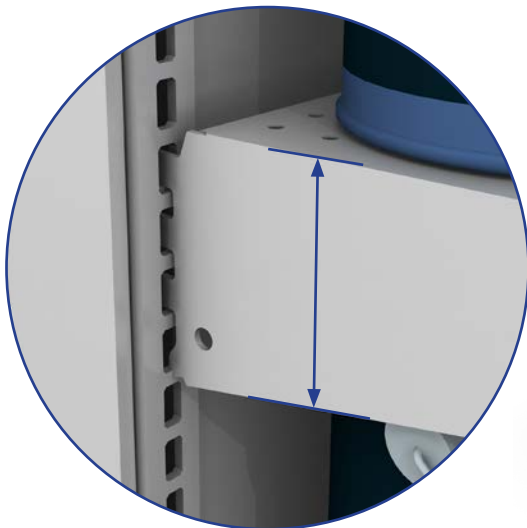
# ADDITIONAL HEAVY DUTY SOLUTIONS *Lozier*<sup>®</sup>

## Durable solutions for heavy duty merchandising

Lozier also proudly offers Heavy Duty Solutions that can be used with our standard or heavy duty gondola. These components can allow our customers to merchandise their heavier products more effectively.

### Heavy Duty Shelf: HL\_N

- Taller bracket profile allows 40% higher load capacity.
- (600lbs evenly distributed (16,19,28,&31"D) 700lbs evenly distributed (22 &25"D).

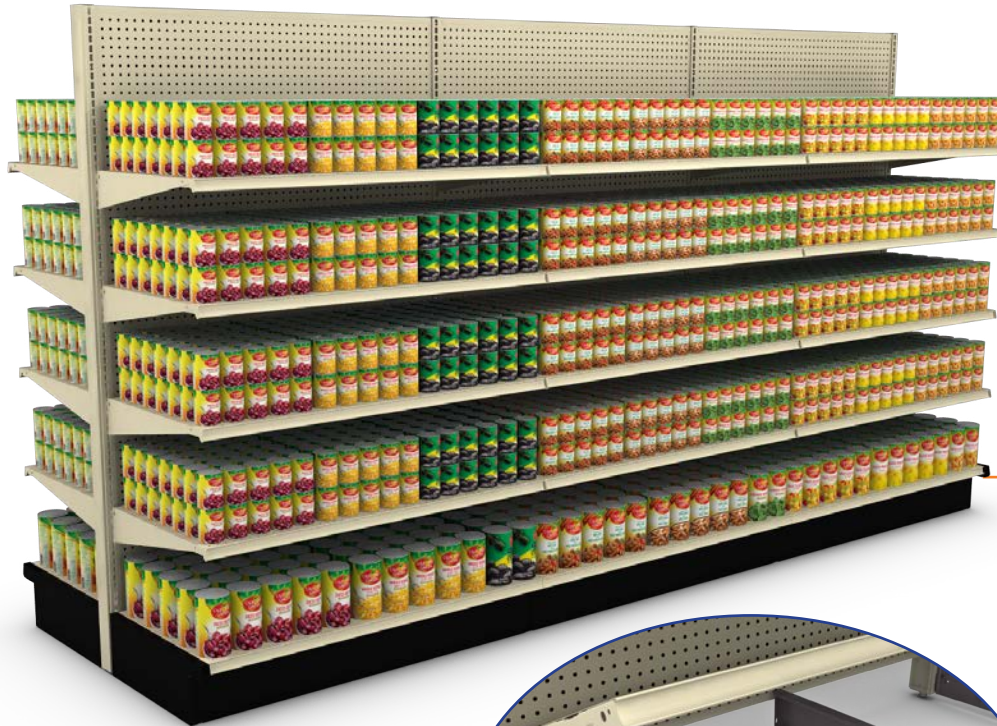


### REINFORCED DECK: SDRE\_

- Reinforced tag area reduces deflection at front of deck.
- Available with Aluminum Tag Moldings installed or order molding separately.
- does not increase load capacity over regular decks.

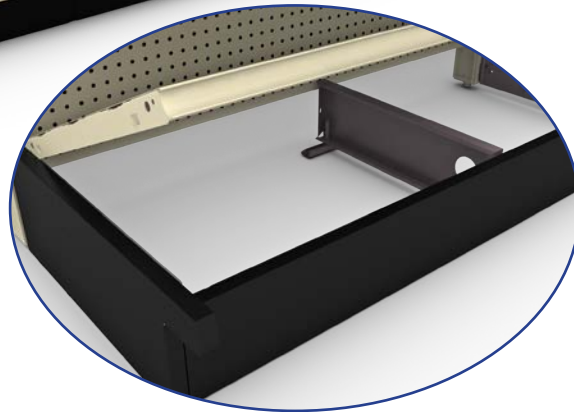
# ADDITIONAL HEAVY DUTY SOLUTIONS **Lozier®**

Durable solutions for heavy duty merchandising



## HD DECK: HDSD\_

- Reduced deflection under heavy loads.
- Load capacity increased for heavier merchandise.
- This Heavy Duty Deck holds 50% higher load capacity. 900lbs evenly distributed(19"D) 1200lbs evenly distributed (22"-31"D).
- 4' widths only - Standard base decks less than 4' provide the same level of deflection resistance under load as the 4' HDSD deck.



## LOAD EASER BRACKET: LEBB06/LB

- Use under the base deck between the base brackets.
- Increases load capacity of the base deck.
- Integrated leveling legs.
- 1100 lbs evenly distributed per deck 13" - 19"
- 1300 lbs evenly distributed per deck 22" - 31"

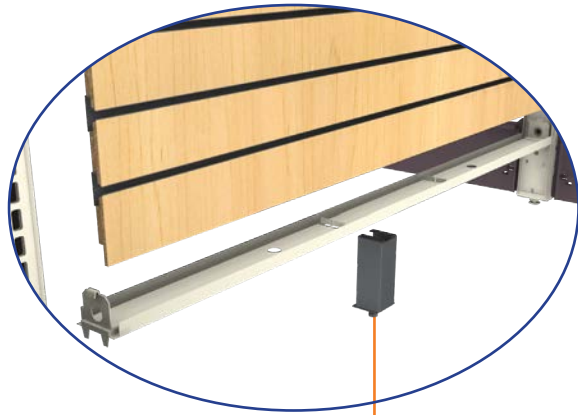


# ADDITIONAL HEAVY DUTY SOLUTIONS **Lozier**<sup>®</sup>

Durable solutions for heavy duty merchandising

## HD BOTTOM RAIL: R\_HDB

- Welded support clip on Standard Bottom Rail for increased load capacity on back panels.
- Use when back panel merchandise loads exceed the rated load of a Standard Bottom Rail.
- Standard bottom rail load capacity is 150lbs.
- HD bottom rail load capacity is 350lbs.
- Used in all 3' and 4' slotwall applications.



## BOTTOM RAIL SUPPORT: BBS

- Can be used in addition to R\_HDB.
- Helps with support of heavily loaded backs.
- Increases load rating of bottom rail to 500lbs per section.

**FOR MORE INFORMATION VISIT US AT**  
[www.lozier.com](http://www.lozier.com)