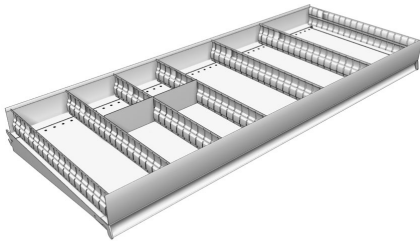


| You are in: [Lozier](#) > [Products](#) > [Metal Binning](#)

Metal Binning

Part Number: **HS**



Product Details:

- 3"H
- Fronts and Dividers attach to Shelf perforations
- Dividers and Cross Dividers are adjustable in 1" increments

How to Order

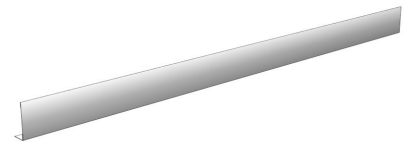
Metal Binning Front

Product Options and Numbers

Example Part #: **HS1152** **PLT**

Metal Binning Front: **HS1152**

Standard Finish: **PLT**, Optional Catalog Colors




Suffix Key

PLT

- Platinum

Metal Binning Dividers

Product Options and Numbers

Shelf Depth	Part #	Standard Finish
10"	HS1131	 PLT , Optional Catalog Colors
13"	HS1132	
15"	HS1133	
16"	HS1134	
17"	HS1135	
19"	HS1137	
22"	HS1138	

Suffix Key

PLT

- Platinum

Metal Binning Cross Dividers

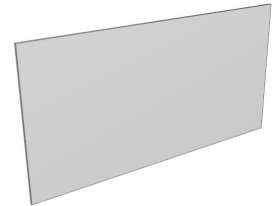
Product Options and Numbers

Example Part #: [HS1121](#) **PLT**

4" Cross Divider: [HS1121](#)

6" Cross Divider: [HS1122](#)

Standard Finish: **PLT**, Optional Catalog Colors



Suffix Key

PLT

- Platinum