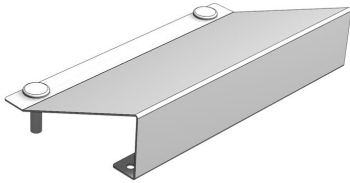


| You are in: [Lozier](#) > [Products](#) > [Compartment Dual Crosstube Shelf](#)

Compartment Dual Crosstube Shelf

Part Number: **CDXS**



Compartment Dual Crosstube Shelf is available in three styles: Flat for jigsaw, sanders, or other hand tools; Angled to display circular saws; and Wire Tray to display angle grinders, reciprocating saw, or other odd shape tools. All Shelves are available in 10", 2', 3', or 4' widths and 5" depths.

Product Details:

Available in three styles:

- Flat: Versatile for jigsaw, sanders, or other hand tools
- Angled: Use for circular saws
- Wire Tray: Use for angle grinders, reciprocating saw, or other oddly shaped tools

Product Options and Numbers

Example Part #: **CDXS 4 5 F PLT**

Compartment Dual Crosstube Shelf: **CDXS**

Width: 10", 2', 3', 4'

Depth: 5"

Style: F, A, W

Standard Finish: PLT, Optional Catalog Colors

Suffix Key	
------------	--

F	- Flat
A	- Angled up 24°
W	- Wire Tray
PLT	- Platinum