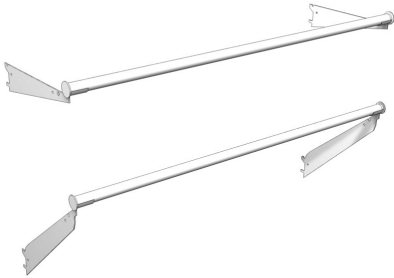


| You are in: [Lozier](#) > [Products](#) > [Hangrod Assembly](#)

Hangrod Assembly

Part Number: **LHR**



Hangrod Assembly includes one Rod and one pair of Brackets. It attaches directly to Uprites and can be used on independent or continuous sections. Rods are elevated for hanger bypass. Order End Caps separately. Two Bracket styles are available: Straight or Upslope.

Product Details:

- 1 1/4" diameter chrome plated rod
- Can be used in independent or continuous sections
- Brackets positively attach to Hangrod, no fasteners needed
- Available Bracket styles: Straight or Upslope
- Rods elevated for hanger bypass
- Order End Caps separately: two required for each continuous run and/or independent application
- 12"D and 16"D Straight Brackets only, 14"D Upslope Brackets only
- Evenly distributed load of 300 lbs for 12"D, 150 lbs for 14"D, and 200 lbs for 16"D

INCLUDES

- 1 Rod
- 1 Pair of Brackets

How to Order

Example Part #: **LHR U 4 14 PLT BCP**

Hangrod Assembly: **LHR**

Bracket: **U**, Leave blank for Straight Bracket

Width: 3', **4'**

Depth: 12", **14"**, 16"

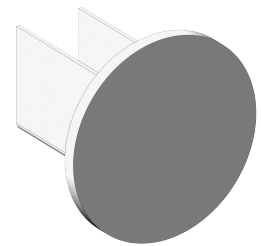
Bracket Standard Finish: **PLT**, Optional Catalog Colors

Hangrod Standard Finish: **BCP**

Suffix Key	
U	- Upslope Bracket
PLT	- Platinum
BCP	- Chrome Plated

Hangrod Assembly End Caps

- Order End Caps separate from Hangrod Assembly
- Two required for each continuous run and/or independent application



Product Options and Numbers

Part #: **HREC BCP**

Hangrod Assembly End Caps: **HREC**

Standard Finish: **BCP**

Suffix Key	
BCP	- Chrome Plated