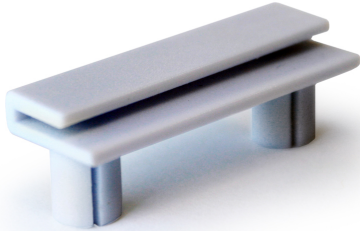


| You are in: [Lozier](#) > [Products](#) > [Quick Connect Pegboard Back Adapter](#)

Quick Connect Pegboard Back Adapter

Part Number: **LKQCPBA**



Pegboard Back Adapter plugs into any pegboard back with 1" on center holes, allowing you to use Power Track even on non-Lozier fixtures.

Product Details:

- Installs in any pegboard back with 1" on center holes (1/4" diameter)
- Design replicates profile of Lozier Upright Side Rail
- Use when Power Track needs to be installed on a non-Lozier fixture

Product Options and Numbers

Example Part #: **LKQCPBA XG9**

96"L Power Track: **LKQCPBA**

Standard Finish: **XG9**, XG4

Suffix Key	
XG9	- White

XG4

- Black