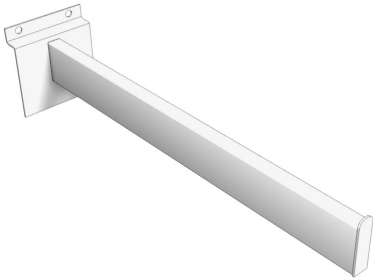


| You are in: [Lozier](#) > [Products](#) > [Slotwall Tubular Face-Out Arms](#)

Slotwall Tubular Face-Out Arms

Part Number: **SWA**



Choose between two styles of Slotwall Tubular Face Out Arms: 12" 7-Ball Downslant or 12" Straight. Both have a 2" back plate to secure your arms to the fixture.

Product Details:

- 1/2" x 1 1/2" rectangular tubing
- 2"W back plate
- Two Styles: Straight and 7-Ball Downslant
- Fits into Slotwall

Product Options and Numbers

Example Part #: **SWA 7BD 12 PCP**

Slotwall Tubular Face-Out Arm: **SWA**

Style: S, **7BD**

Length: **12"**

Standard Finish: **PCP**

Suffix Key

S	- Straight
7BD	- 7-Ball, Downslant
PCP	- Polished Chrome Plated