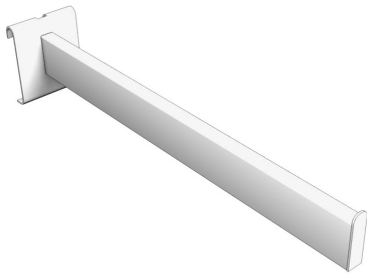


| You are in: [Lozier](#) > [Products](#) > [Wire Grid Tubular Face-Out Arms](#)

Wire Grid Tubular Face-Out Arms

Part Number: **WGA**



Wire Grid Tubular Face-Out Arm is 12" long and a straight style. Contains a 2"W back plate and fits 3"x3" Grid.

Product Details:

- 1/2" x 1 1/2" tubing
- 2"W back plate
- Fits onto 3x3 Grid

Product Options and Numbers

Example Part #: **WGA S 12 BCP**

Slotwall Grid Arm: **WGA**

Style: **S**

Length: **12"**

Standard Finish: **BCP**

Suffix Key

BCP

- Chrome Plated