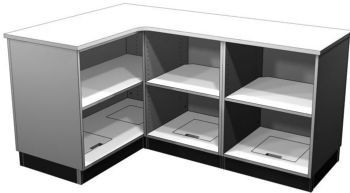


| You are in: Lozier > Products > L-Shaped Counters

L-Shaped Counters

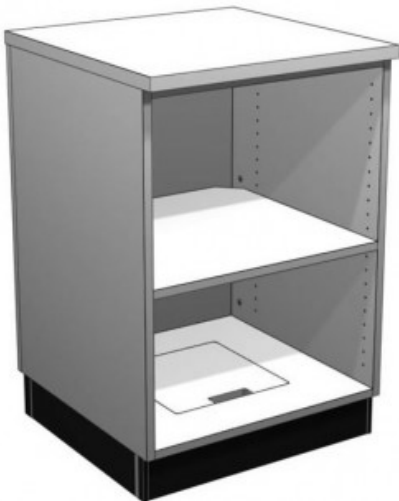
Part Number: C



L-Shaped Wood Counter is available in left-hand or right-hand configurations. Counter features a high pressure laminate top and body with a melamine interior and base. Choose from five Bay Style options.

Product Details:

How to Order



Bay Option A

Adjustable shelf

Electrical access



Bay Option B

Adjustable shelf

Locking drawer

Electrical access



Bay Option C

Adjustable shelf

Hinged doors

Electrical access



Bay Option D

Adjustable shelf

Hinged doors

Locking drawer

Electrical access



Bay Option E

Register well recessed 2 1/2"

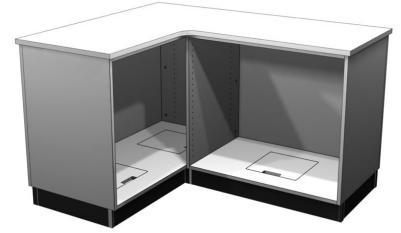
Locking drawer

Adjustable shelf

Electrical access

60" L-Shaped Counter

- High pressure Laminate top and body
- Melamine interior and base
- 48"W x 24"D x 36"H
- 3mm PVC top edge
- Optional 1"W rigid PVC Cartguard located 23" above floor
- Either Bay 1 or Bay 2 must be Style "A"



Product Options and Numbers

Example Part #: **C R 60 A D T LAW LAX MA1 XG4 MB6**

Counter: C

Counter Style: R, L

Counter Length: 60"

Bay 1 Style: A, B, C, D, E

Bay 2 Style: A, B, C, D, E

Optional Cartguard: T, Leave blank if not required

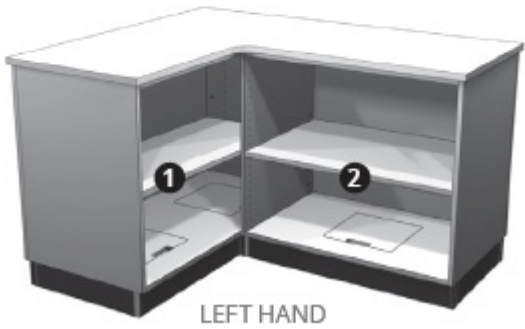
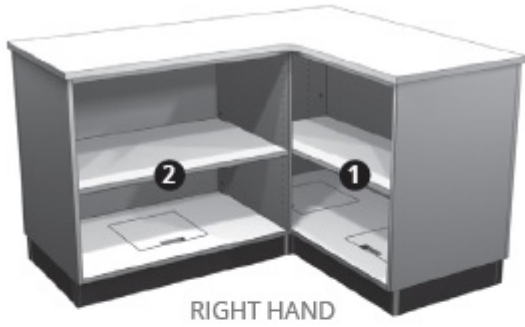
Top Standard Finish: LAW, Optional Catalog Laminates

Body Standard Finish: LAX, Optional Catalog Laminates

Interior Standard Finish: MA1, Optional MA5 & MB5 Melamines

Cartguard: XG8, XG4, Leave blank if not required

Base Standard Finish: MB6

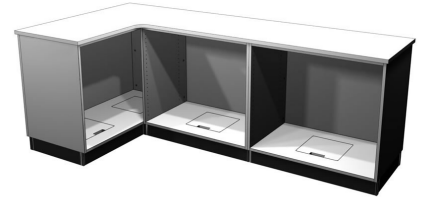


Suffix Key

R	- Right Hand
L	- Left Hand
LAW	- White Leather Laminate
LAX	- Platinum Laminate
MA1	- Platinum Melamine
MA5	- White Melamine
MB5	- Silver Melamine
XG8	- Red Cartguard
XG4	- Black Cartguard
MB6	- Charcoal Black Melamine

72" & 96" L-Shaped Counters

- High pressure Laminate top and body
- Melamine interior and base
- 48"W x 24"D x 36"H
- 3mm PVC top edge
- Optional 1"W rigid PVC Cartguard located 23" above floor
- Either Bay 1 or Bay 2 must be Style "A"



Product Options and Numbers

Example Part #: **C R 96 A B D T LAW LAX MA1 XG4 MB6**

Counter: C

Counter Style: R, L

Counter Length: 72", 96"

Bay 1 Style: A, B, C, D, E

Bay 2 Style: A, B, C, D, E

Bay 3 Style: A, B, C, D, E

Optional Cartguard: T, Leave blank if not required

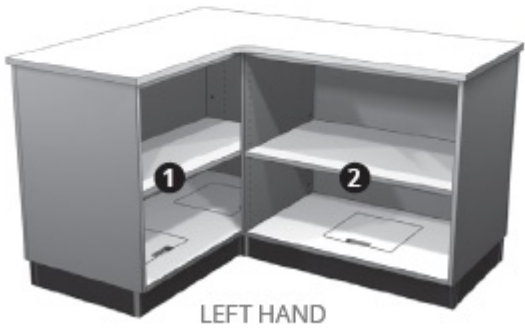
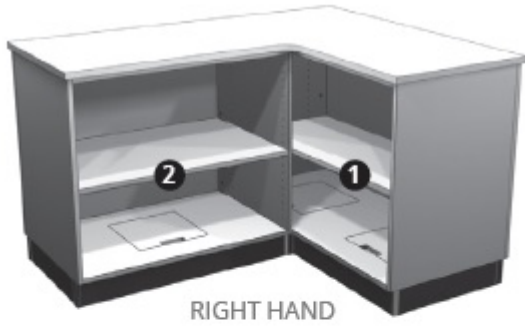
Top Standard Finish: LAW, Optional Catalog Laminates

Body Standard Finish: LAX, Optional Catalog Laminates

Interior Standard Finish: MA1, Optional MA5 & MB5 Melamines

Cartguard: XG8, XG4, Leave blank if not required

Base Standard Finish: MB6



Suffix Key

R	- Right Hand
L	- Left Hand
LAW	- White Leather Laminate
LAX	- Platinum Laminate
MA1	- Platinum Melamine
MA5	- White Melamine
MB5	- Silver Melamine
XG8	- Red Cartguard
XG4	- Black Cartguard
MB6	- Charcoal Black Melamine