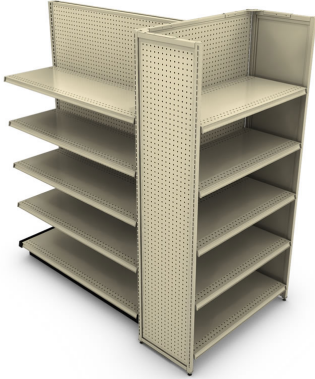


| You are in: Lozier > Products > Merchandising Panel End Cap with Full Height Wing Panels

# Merchandising Panel End Cap with Full Height Wing Panels

Part Number:



Full Height Merchandising Panel with Full Height Accessory Panel Wings

**Product Details:**

## How to Order

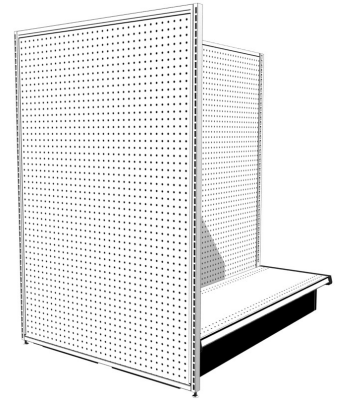
---

This End Cap features a combination of Lozier Products.  
See below for details.

## Full Height Merchandise Panel

---

- Full Height version of Flush Merchandising Panel (accommodates up to a 9" difference)
- Panel extends past the Base End Trim and rests on the floor with leveling legs
- Compatible with all Gondola Back options except Open Backs
- Not compatible with End Deck



## Product Options and Numbers

Example Part #: **FHMP 60 36 06 P M PLT PLT PLT**

**Full Height Merchandise Panel: FHMP**

**Upright Height:** 42", 48", 54", **60"**, 66", 72", 78", 84", 90", 96"

**Width:** 24", 30", **36"**, 48"

**Base Type:** **06**, LB

**Exterior Panel Style:** **P**, M, P2, M2, S, SI, WG, SG, LG, MG

**Interior Panel Style (if required):** **M**, M2, Omit if P2 or M2 Exterior Panel

**Exterior Panel Standard Finish:** **PLT**, Optional Catalog Colors, Optional Catalog Laminates for Slotwall only

**Aluminum Insert (if required):** ALU (SI only)

**Interior Panel Standard Finish (if required):** **PLT**, Optional Catalog Colors, Omit if P2 or M2 Exterior Panel

**Frame Standard Finish:** **PLT**, Optional Catalog Colors

### Suffix Key

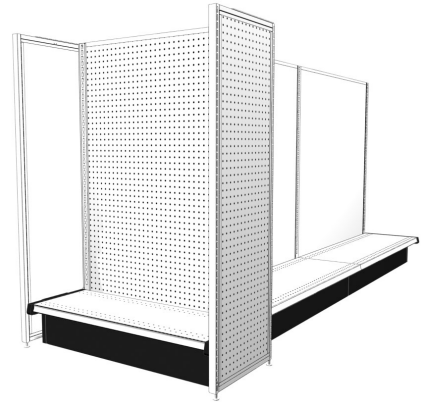
<b>06</b>	- 06 Base (8"H)
<b>LB</b>	- Low Base (6"H)
<b>P</b>	- Pegboard Back
<b>M</b>	- Marteck Back
<b>P2</b>	- Single Pegboard Back, painted two sides
<b>M2</b>	- Single Marteck Back, painted two sides
<b>S</b>	- Slotwall Back
<b>SI</b>	- Slotwall Back with Inserts
<b>WG</b>	- 3x3 Wire Grid Back
<b>SG</b>	- Slot Grid Back
<b>LG</b>	- Louver Grid Back

- MG** - Multi-Grid Back
- PLT** - Platinum
- ALU** - Aluminum

## Full Height Accessory Panel

---

- Full Height version of Flush Accessory Panel (FAP)
- Panel extends past the Base End Trim or End Deck and rests on the floor with leveling legs
- Not compatible with T-Leg Wall End Displays



### Product Options and Numbers

Example Part #: **FHAP 60 16 P M PLT PLT PLT**

Full Height Accessory Panel: **FHAP**

Upright Height: 42", 48", 54", **60"**, 66", 72", 78", 84", 90", 96"

Width: 14", **16"**, 18", 24", 30", 36"

Exterior Panel Style: **P**, M, P2, M2, S, SI, WG, SG, LG, MG

Interior Panel Style (if required): **M**, M2, Omit if P2 Exterior Panel

Exterior Panel Standard Finish: **PLT**, Optional Catalog Colors, Optional Catalog Laminates for Slotwall only

Aluminum Insert (if required): ALU (SI only)

Interior Panel Standard Finish (if required): **PLT**, Optional Catalog Colors, Omit if P2 Exterior Panel

Frame Standard Finish: **PLT**, Optional Catalog Colors

### Suffix Key

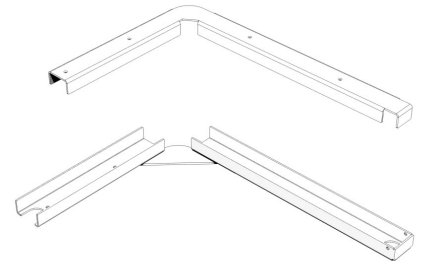
- |           |   |
|-----------|---|
| <b>P</b>  | - Pegboard Back                           |
| <b>M</b>  | - Marteck Back                            |
| <b>P2</b> | - Single Pegboard Back, painted two sides |
| <b>M2</b> | - Single Marteck Back, painted two sides  |
| <b>S</b>  | - Slotwall Back                           |
| <b>SI</b> | - Slotwall Back with Inserts              |
| <b>WG</b> | - 3x3 Wire Grid Back                      |
| <b>SG</b> | - Slot Grid Back                          |

- LG** - Louver Grid Back
- MG** - Multi-Grid Back
- PLT** - Platinum
- ALU** - Aluminum

## Full Height Wing to Full Height End Frame Accessory Panel Connectors

---

- Accessory Panel Connectors are needed to attach Accessory Panels to Wall or Contoured End Display, End Merchandising Panels and Close Off Panel
- Order when installing a Full Height Accessory Panel (FHAP) to a Full Height Merchandising Panel (FHMP)
- See Installation Instructions for load capacities and limitations



### INCLUDES

- Upper Connector
- Lower Base Support
- Hardware Pack

### Product Options and Numbers

Example Part #: **APF 16 L PLT**

Full Height Wing To Full Height End Frame Accessory Panel Connectors: **APF**

Width: 14", **16"**, 18", 24", 30", 36"

Flush Position: **L, R**

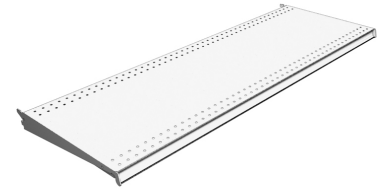
Standard Finish: **PLT**, Optional Catalog Colors

Suffix Key	
<b>L</b>	- Flush Left
<b>R</b>	- Flush Right
<b>PLT</b>	- Platinum

## TL Shelf

---

- Two position tilt-in Shelf with extended bracket
- Angular adjustment: flat or 17° downslope
- Molding accommodates a 1.235" tag
- 1/4" perforations for clip-on accessories
- Can order with Aluminum Tag Moldings installed or can order Molding for Shelf separately



## Product Options and Numbers

Example Part #: **TL 4 19 N PLT**

**TL Shelf:** TL

**Width:** 2', 30", 3', 4'

**Depth:** 7", 10", 13", 15", 16", 17", **19"**, 20", 22", 25", 28", 31"

**Molding:** N, M13P, M13S, M35P, M35S

**Standard Finish:** PLT, Optional Catalog Colors

**Finish When Ordering Painted Molding :** 34K, Please Contact Product Management for multiple finish codes

### Suffix Key

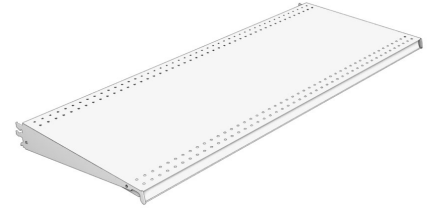
<b>N</b>	- No Molding
<b>M13P</b>	- M13 Painted Molding
<b>M13S</b>	- M13 Satin Molding
<b>M35P</b>	- M13 Painted Molding
<b>M35S</b>	- M35 Satin Molding
<b>PLT</b>	- Platinum
<b>34K</b>	- Platinum Body & Platinum Painted Molding

Shelf Depth	Downslope	
	Flat	17°
7"	300 lbs	300 lbs
10" - 25"	500 lbs	250 lbs
28" & 31"	400 lbs	200 lbs

Lbs. evenly distributed

## DL Shelf

- Three position, drop-in shelf with extended bracket
- Angular adjustment: flat, 17° or 30° downslope
- 1/4" perforations for clip-on accessories
- Can order with Aluminum Tag Moldings or can order Molding for shelf separately



### Product Options and Numbers

Example Part #: **DL 4 19 N PLT**

**DL Shelf:** **DL**

**Width:** 2', 30", 3', **4'**

**Depth:** 7", 10", 13", 15", 16", 17", **19"**, 20", 22", 25", 28", 31"

**Molding:** **N**, M13P, M13S, M35P, M35S

**Standard Finish:** **PLT**, Optional Catalog Colors

**Finish When Ordering Painted Molding :** **34K**, Please Contact Product Management for multiple finish codes

#### Suffix Key

<b>N</b>	- No Molding
<b>M13P</b>	- M13 Painted Molding
<b>M13S</b>	- M13 Satin Molding
<b>M35P</b>	- M13 Painted Molding
<b>M35S</b>	- M35 Satin Molding
<b>PLT</b>	- Platinum
<b>34K</b>	- Platinum Body & Platinum Painted Molding

Shelf Depth	Downslope		
	Flat	17°	30°
<b>7"</b>	300 lbs	300 lbs	125 lbs
<b>10" - 19"</b>	500 lbs	250 lbs	250 lbs
<b>20" - 25"</b>	500 lbs	250 lbs	125 lbs

<b>28" &amp; 31"</b>	400 lbs	200 lbs	100 lbs
----------------------	---------	---------	---------

Lbs. evenly distributed.