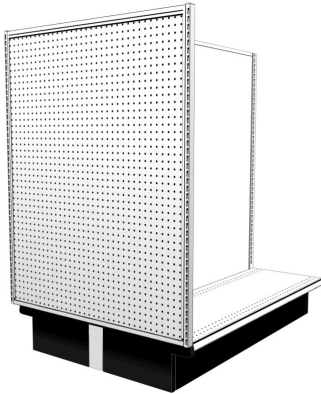


| You are in: Lozier > Products > Merchandise Panels

Merchandise Panels

Part Number: **EMP, FMP, FHMP**



Choose the style that fits your merchandising needs: End (EMP), Flush (FMP) and Full Height (FHMP).

Product Details:

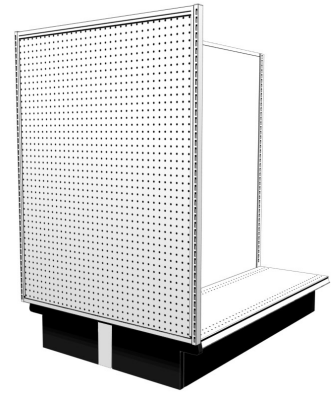
- Three styles available: End (EMP), Flush (FMP) and Full Height (FHMP)
- All frames are slotted to accept most standard Lozier Shelves and Accessories
- Frames are punched to accept Double Stem Mount Sign Holder Frame (tapered style)
- Accepts Accessory Panels and Connectors
- Upright End Trims not required and can be deleted from Island End
- See Installation Instructions for load capacities and limitations

When Merchandising Panels are used on a fixture where the first shelving section behind the Panels is not equipped with Shelves that engage into the Upright slots, Top Rail Hold Down Kits (HMA4381) must be installed. Failure to do this could allow the Top Rail to become disengaged and the fixture to fall over, causing property damage or personal injury.

How to Order

End Merchandise Panel

- Use on Islands with same sized Base Decks on both sides
- Top of Panel is 1" above top of Upright
- Fits around Upright for flush fit to Island Gondola
- When using Pegboard, the two middle columns of exterior peg holes are unusable
- Compatible with End Deck



Product Options and Numbers

Example Part #: **EMP 60 36 06 P M PLT PLT PLT**

End Merchandise Panel: **EMP**

Upright Height: 42", 48", 54", **60"**, 66", 72", 78", 84", 90", 96"

Width: 24", 30", **36"**, 48"

Base Type: **06**, LB

Exterior Panel Style: **P**, M, P2, M2

Interior Panel Style (if required): **M**, M2, Omit if P2 or M2 Exterior Panel

Exterior Panel Standard Finish: **PLT**, Optional Catalog Colors

Interior Panel Standard Finish (if required): **PLT**, Optional Catalog Colors, Omit if P2 or M2 Exterior Panel

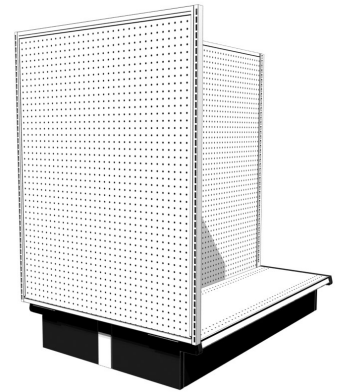
Frame Standard Finish: **PLT**, Optional Catalog Colors

Suffix Key

06	- 06 Base (8"H)
LB	- Low Base (6"H)
P	- Pegboard Back
M	- Marteck Back
P2	- Single Pegboard Back, painted two sides
M2	- Single Marteck Back, painted two sides
PLT	- Platinum
ALU	- Aluminum

Flush Merchandise Panel

- Use on Islands with different sized Base Decks on both sides (accommodates up to a 9" difference)
- Top of Panel is flush with top of Uprites
- Hangs on outside of Uprite
- When using Pegboard, all exterior peg holes are usable
- Only Merchandise Panel compatible with T-Leg Base
- Compatible with all Gondola Back options except Open Backs
- Compatible with End Deck



Product Options and Numbers

Example Part #: **FMP 60 36 06 P M PLT PLT PLT**

Flush Merchandise Panel: **FMP**

Uprite Height: 42", 48", 54", **60"**, 66", 72", 78", 84", 90", 96"

Width: 24", 30", **36"**, 48"

Base Type: **06**, LB, TL

Exterior Panel Style: **P**, M, P2, M2, S, SI, WG, SG, LG, MG

Interior Panel Style (if required): **M**, M2, Omit if P2 or M2 Exterior Panel

Exterior Panel Standard Finish: **PLT**, Optional Catalog Colors, Optional Catalog Laminates for Slotwall only

Aluminum Insert (if required): ALU (SI only)

Interior Panel Standard Finish (if required): **PLT**, Optional Catalog Colors, Omit if P2 or M2 Exterior Panel

Frame Standard Finish: **PLT**, Optional Catalog Colors

TL Base Standard Finish = Frame Standard Finish

06 and LB Base Angle Standard Finish = CHR (Charcoal).

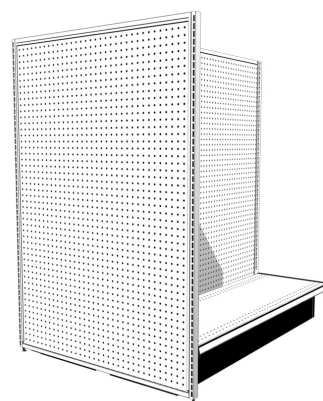
Suffix Key

06	- 06 Base (8"H)
LB	- Low Base (6"H)
TL	- T-Leg Base
P	- Pegboard Back
M	- Marteck Back
P2	- Single Pegboard Back, painted two sides
M2	- Single Marteck Back, painted two sides

S	- Slotwall Back
SI	- Slotwall Back with Inserts
WG	- 3x3 Wire Grid Back
SG	- Slot Grid Back
LG	- Louver Grid Back
MG	- Multi-Grid Back
PLT	- Platinum
ALU	- Aluminum

Full Height Merchandise Panel

- Full Height version of Flush Merchandising Panel (accommodates up to a 9" difference)
- Panel extends past the Base End Trim and rests on the floor with leveling legs
- Compatible with all Gondola Back options except Open Backs
- Not compatible with End Deck



Product Options and Numbers

Example Part #: **FHMP 60 36 06 P M PLT PLT PLT**

Full Height Merchandise Panel: **FHMP**

Upright Height: 42", 48", 54", **60"**, 66", 72", 78", 84", 90", 96"

Width: 24", 30", **36"**, 48"

Base Type: **06**, LB

Exterior Panel Style: **P**, M, P2, M2, S, SI, WG, SG, LG, MG

Interior Panel Style (if required): **M**, M2, Omit if P2 or M2 Exterior Panel

Exterior Panel Standard Finish: **PLT**, Optional Catalog Colors, Optional Catalog Laminates for Slotwall only

Aluminum Insert (if required): ALU (SI only)

Interior Panel Standard Finish (if required): **PLT**, Optional Catalog Colors, Omit if P2 or M2 Exterior Panel

Frame Standard Finish: **PLT**, Optional Catalog Colors

Suffix Key

06	- 06 Base (8"H)
LB	- Low Base (6"H)
P	- Pegboard Back
M	- Marteck Back
P2	- Single Pegboard Back, painted two sides
M2	- Single Marteck Back, painted two sides
S	- Slotwall Back
SI	- Slotwall Back with Inserts
WG	- 3x3 Wire Grid Back
SG	- Slot Grid Back
LG	- Louver Grid Back
MG	- Multi-Grid Back
PLT	- Platinum
ALU	- Aluminum