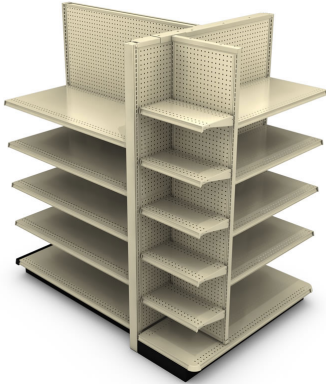


| You are in: [Lozier](#) > [Products](#) > [Versa with Flush Accessory Panel](#)

Versa with Flush Accessory Panel

Part Number:



Create multiple End Cap configurations through the flexibility of Versa shelving components. Add Accessory Panels to extend merchandising opportunities without intruding into the aisle.

Product Details:

How to Order

This End Cap features a combination of Lozier Products. See below for details.

Contoured End Display

- Same as Wall End Display, except uses Contoured End Decks, Contoured End Shelves, and Contoured Base Bracket End Trims
- Order Shelves separately
- Order Gap Filler separately when unit is wider than Island
- Actual width of unit equals nominal width plus 2"
- Base End Trim and Closed Base Front available in CHR only



TO ORDER OTHER BACK STYLES

- Delete the Peg Front and/or Marteck Rear Back(s) and replace with the desired Back(s)
- If Slotwall Backs desired, order required Rails

TO ORDER DECKS WITH ALUMINUM MOLDING

- Delete Standard Deck and add Deck with Molding

Product Options and Numbers

Example Part #: **CED 4 60 22 06 S P M PLT PLT PLT**

Contoured End Display: **CED**

Unit Width: 2', 30", 3', **4'**

Upright Height: 48", 54", **60"**, 66", 72", 78", 84", 90", 96"

Base Deck Depth: 13", 16", 19", **22"**, 25"

Base Height: **06**, LB

Spring Locking Base Bracket: **S**

Front Back Style: **P**

Rear Back Style: **M**

Uprights and Upright Trim Standard Finish: **PLT**, Optional Catalog Colors

Back and Rail Standard Finish: **PLT**, Optional Catalog Colors

Deck Standard Finish: **PLT**, Optional Catalog Colors

Suffix Key

LB - Low Base (6"H)

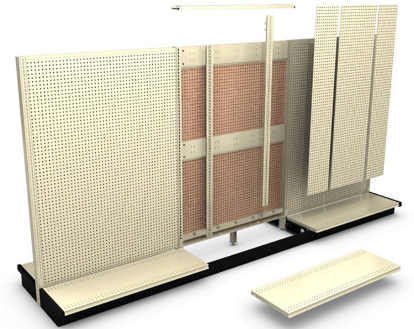
- 06** - 06 Base (8"H)
- P** - Pegboard Back
- M** - Marteck Back
- PLT** - Platinum

| CED SIZES | | | | | | | | | |
|-----------|--------|-----|-----|-----|-----|-----|-----|-----|-----|
| Depth | Height | | | | | | | | |
| | 48" | 54" | 60" | 66" | 72" | 78" | 84" | 90" | 96" |
| 13" | | | N/A | N/A | N/A | N/A | N/A | N/A | N/A |
| 16" | | | | | | N/A | N/A | N/A | N/A |
| 19" | | | | | | | | | N/A |
| 22" | | | | | | | | | |
| 25" | | | | | | | | | |

Versa System

HIGHLIGHTS

- Converts existing sections into multiple width sections
- Works with standard or heavy duty systems
- Accepts most standard Lozier Shelves and Accessories
- Order Heavy Duty Versa when existing section is Heavy Duty
- Versa Half Splicer ordered separately as needed to splice Hardboard Backs
- Backs must be ordered separately
- Regular and Heavy Duty Versa supports standard load capacity of a 48"W system - 12,000 in-lbs



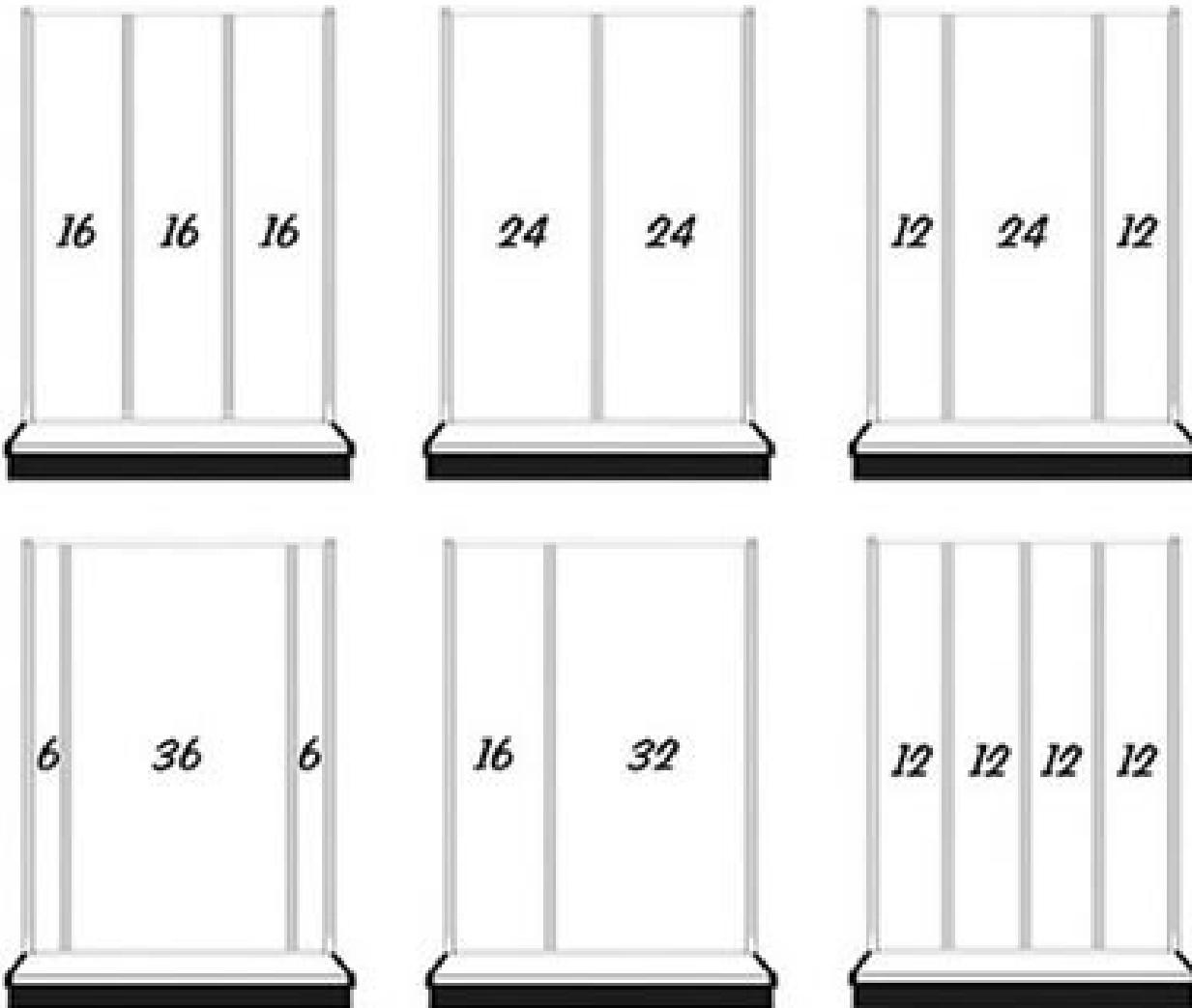
INCLUDES

- Versa Uprite
- Versa Spanners
- Versa Top Rail
- Half Splicer Rail (where applicable)
- Versa Bottom Spanner
- Bottom Rail Support

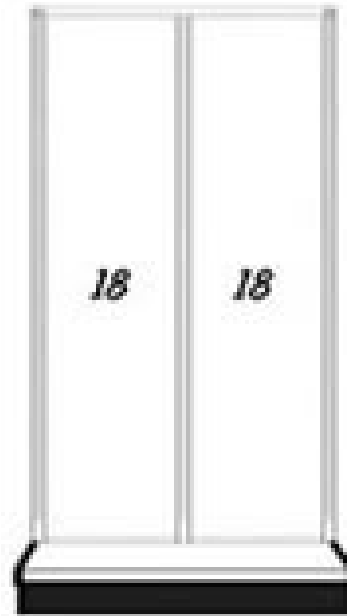
VERSA SYSTEM CONFIGURATIONS

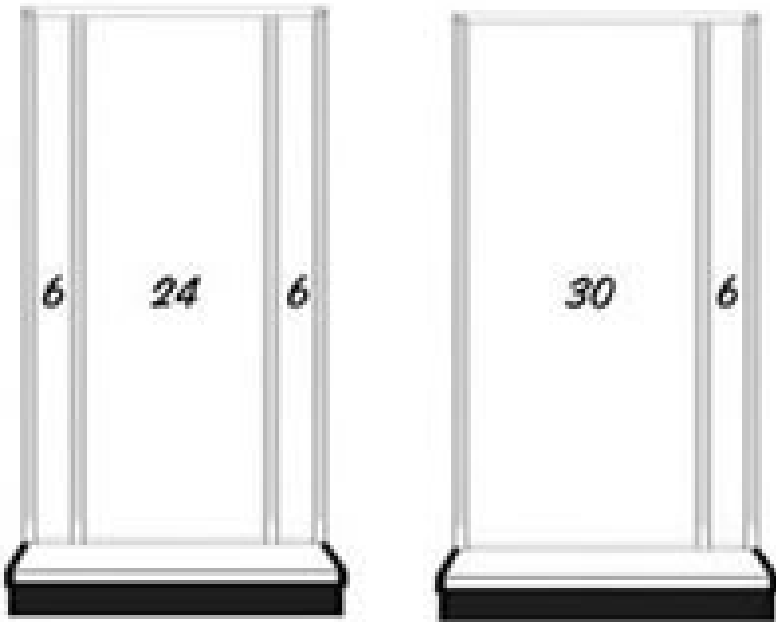
- Available 36"H to 96"H
- If using Versa Slotwall, can use on Versa side only. Slotwall is not compatible on backside of Versa Section
- Order Versa Half Splicer for Hardboard Backs on Sections 78"H and taller
- See STD Hardboard Backs for ordering information
- See Versa Slotwall VBE Backs for ordering information

VERSA SYSTEM 4' CONFIGURATIONS



VERSA SYSTEM 3' CONFIGURATIONS





Product Options and Numbers

Example Part #: **VS 4 54 3 H H PLT PTD PLT PLT**

Versa System: **VS**,VSH

Section Width:3', **4'**

Section Height:36", 42", 48", **54"**, 60", 66", 72", 78", 84", 90", 96"

Quantity of Versa Sections:2,**3**,4

Spanner Style: **H**,S

Opposite Back Style: **H**,Omit if other

Upright Standard Finish: **PLT**,Optional Catalog Colors

Spanner Standard Finish: **PTD**

Side A Rail Standard Finish:**PLT**,Optional Catalog Colors

Side B Rail Standard Finish: **PLT**,Optional Catalog Colors

Side B Rail Finish only required for sections 78"H or taller and with Hardboard selected on the opposite side.

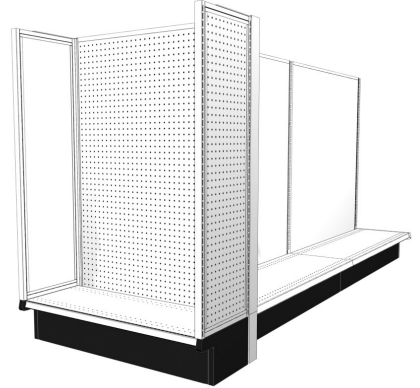
Suffix Key

VS - Versa System to fit Standard Duty

| | |
|------------|----------------------------------|
| VSH | - Versa System to fit Heavy Duty |
| H | - Hardboard |
| S | - Slotwall |
| PLT | - Platinum |
| PTD | - Painted Random |

Flush Accessory Panel

- Top of Panel sits flush with Flush Merchandising Panel (FMP)
- Can be set flush or inline for desired application
- Not compatible with End Merchandising Panels (EMP)



Product Options and Numbers

Example Part #: **FAP 60 16 06 P M PLT PLT PLT**

Flush Accessory Panel: **FAP**

Upright Height: 42", 48", 54", **60"**, 66", 72", 78", 84", 90", 96"

Width: 14", **16"**, 18", 24", 30", 36"

Base Type: **06**, LB, TL

Exterior Panel Style: **P**, M, P2, M2, S, SI, WG, SG, LG, MG

Interior Panel Style (if required): **M**, M2, Omit if P2 Exterior Panel

Exterior Panel Standard Finish: **PLT**, Optional Catalog Colors, Optional Catalog Laminates for Slotwall only

Aluminum Insert (if required): ALU (SI only)

Interior Panel Standard Finish (if required): **PLT**, Optional Catalog Colors, Omit if P2 Exterior Panel

Frame Standard Finish: **PLT**, Optional Catalog Colors

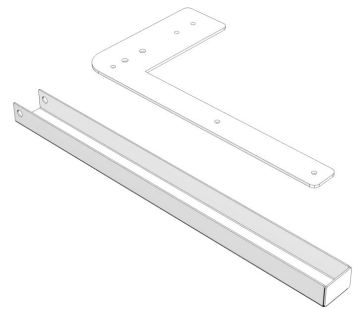
Suffix Key

| | |
|-----------|------------------|
| 06 | - 06 Base (8"H) |
| LB | - Low Base (6"H) |
| TL | - T-Leg Base |
| P | - Pegboard Back |
| M | - Marteck Back |

| | |
|------------|---|
| P2 | - Single Pegboard Back, painted two sides |
| M2 | - Single Marteck Back, painted two sides |
| S | - Slotwall Back |
| SI | - Slotwall Back with Inserts |
| WG | - 3x3 Wire Grid Back |
| SG | - Slot Grid Back |
| LG | - Louver Grid Back |
| MG | - Multi-Grid Back |
| PLT | - Platinum |
| ALU | - Aluminum |

Inline Wing Over Deck Flush Accessory Panel Connectors

- For inline applications on a Wall End Display Deck, Contoured End Display Deck or Island Section Deck
- A Wall End Display Rail (WEDER) is required, order separately
- See Installation Instructions for load capacities and limitations



INCLUDES

- Upper Connector
- Lower Stabilizer
- Hardware Pack

Product Options and Numbers

Example Part #: **APID 16 PLT**

Inline Wing Over Deck Accessory Panel Connectors: APID

Width: 14", **16"**, 18", 24", 30", 36"

Connector Standard Finish: **PLT**, Optional Catalog Colors

Suffix Key

PLT - Platinum