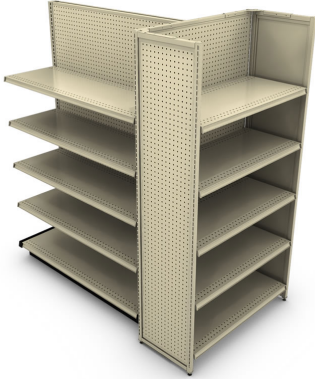


| You are in: Lozier > Products > Merchandising Panel End Cap with Full Height Wing Panels

Merchandising Panel End Cap with Full Height Wing Panels

Part Number:



Full Height Merchandising Panel with Full Height Accessory Panel Wings

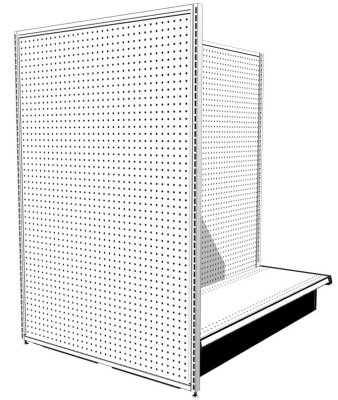
Product Details:

How to Order

This End Cap features a combination of Lozier Products.
See below for details.

Full Height Merchandise Panel

- Full Height version of Flush Merchandising Panel (accommodates up to a 9" difference)
- Panel extends past the Base End Trim and rests on the floor with leveling legs
- Compatible with all Gondola Back options except Open Backs
- Not compatible with End Deck



Product Options and Numbers

Example Part #: **FHMP 60 36 06 P M PLT PLT PLT**

Full Height Merchandise Panel: FHMP

Upright Height: 42", 48", 54", **60"**, 66", 72", 78", 84", 90", 96"

Width: 24", 30", **36"**, 48"

Base Type: **06**, LB

Exterior Panel Style: **P**, M, P2, M2, S, SI, WG, SG, LG, MG

Interior Panel Style (if required): **M**, M2, Omit if P2 or M2 Exterior Panel

Exterior Panel Standard Finish: **PLT**, Optional Catalog Colors, Optional Catalog Laminates for Slotwall only

Aluminum Insert (if required): ALU (SI only)

Interior Panel Standard Finish (if required): **PLT**, Optional Catalog Colors, Omit if P2 or M2 Exterior Panel

Frame Standard Finish: **PLT**, Optional Catalog Colors

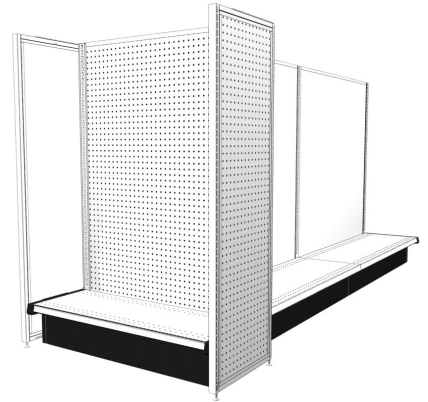
Suffix Key

06	- 06 Base (8"H)
LB	- Low Base (6"H)
P	- Pegboard Back
M	- Marteck Back
P2	- Single Pegboard Back, painted two sides
M2	- Single Marteck Back, painted two sides
S	- Slotwall Back
SI	- Slotwall Back with Inserts
WG	- 3x3 Wire Grid Back
SG	- Slot Grid Back
LG	- Louver Grid Back

- MG** - Multi-Grid Back
- PLT** - Platinum
- ALU** - Aluminum

Full Height Accessory Panel

- Full Height version of Flush Accessory Panel (FAP)
- Panel extends past the Base End Trim or End Deck and rests on the floor with leveling legs
- Not compatible with T-Leg Wall End Displays



Product Options and Numbers

Example Part #: **FHAP 60 16 P M PLT PLT PLT**

Full Height Accessory Panel: **FHAP**

Upright Height: 42", 48", 54", **60"**, 66", 72", 78", 84", 90", 96"

Width: 14", **16"**, 18", 24", 30", 36"

Exterior Panel Style: **P**, M, P2, M2, S, SI, WG, SG, LG, MG

Interior Panel Style (if required): **M**, M2, Omit if P2 Exterior Panel

Exterior Panel Standard Finish: **PLT**, Optional Catalog Colors, Optional Catalog Laminates for Slotwall only

Aluminum Insert (if required): ALU (SI only)

Interior Panel Standard Finish (if required): **PLT**, Optional Catalog Colors, Omit if P2 Exterior Panel

Frame Standard Finish: **PLT**, Optional Catalog Colors

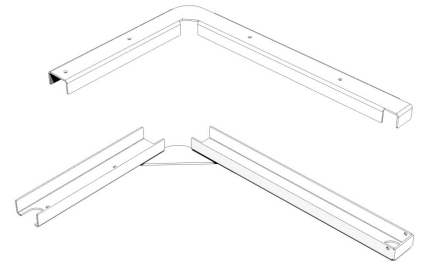
Suffix Key

- P** - Pegboard Back
- M** - Marteck Back
- P2** - Single Pegboard Back, painted two sides
- M2** - Single Marteck Back, painted two sides
- S** - Slotwall Back
- SI** - Slotwall Back with Inserts
- WG** - 3x3 Wire Grid Back
- SG** - Slot Grid Back

- LG** - Louver Grid Back
- MG** - Multi-Grid Back
- PLT** - Platinum
- ALU** - Aluminum

Full Height Wing to Full Height End Frame Accessory Panel Connectors

- Accessory Panel Connectors are needed to attach Accessory Panels to Wall or Contoured End Display, End Merchandising Panels and Close Off Panel
- Order when installing a Full Height Accessory Panel (FHAP) to a Full Height Merchandising Panel (FHMP)
- See Installation Instructions for load capacities and limitations



INCLUDES

- Upper Connector
- Lower Base Support
- Hardware Pack

Product Options and Numbers

Example Part #: **APF 16 L PLT**

Full Height Wing To Full Height End Frame Accessory Panel Connectors: **APF**

Width: 14", **16"**, 18", 24", 30", 36"

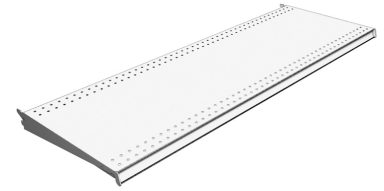
Flush Position: **L**, R

Standard Finish: **PLT**, Optional Catalog Colors

Suffix Key	
L	- Flush Left
R	- Flush Right
PLT	- Platinum

TL Shelf

- Two position tilt-in Shelf with extended bracket
- Angular adjustment: flat or 17° downslope
- Molding accommodates a 1.235" tag
- 1/4" perforations for clip-on accessories
- Can order with Aluminum Tag Moldings installed or can order Molding for Shelf separately



Product Options and Numbers

Example Part #: **TL 4 19 N PLT**

TL Shelf: **TL**

Width: 2', 30", 3', **4'**

Depth: 7", 10", 13", 15", 16", 17", **19"**, 20", 22", 25", 28", 31"

Molding: **N**, M13S, M35S

Standard Finish: **PLT**, Optional Catalog Colors

Suffix Key

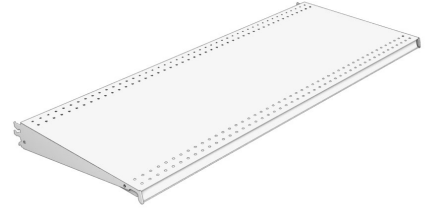
N	- No Molding
M13S	- M13 Satin Molding
M35S	- M35 Satin Molding
PLT	- Platinum

Shelf Depth	Downslope	
	Flat	17°
7"	300 lbs	300 lbs
10" - 25"	500 lbs	250 lbs
28" & 31"	400 lbs	200 lbs

Lbs. evenly distributed

DL Shelf

- Three position, drop-in shelf with extended bracket
- Angular adjustment: flat, 17° or 30° downslope
- 1/4" perforations for clip-on accessories
- Can order with Aluminum Tag Moldings or can order Molding for shelf separately



Product Options and Numbers

Example Part #: **DL 4 19 N PLT**

DL Shelf: **DL**

Width: 2', 30", 3', **4'**

Depth: 7", 10", 13", 15", 16", 17", **19"**, 20", 22", 25", 28", 31"

Molding:**N**, M13S, M35S

Standard Finish: **PLT**, Optional Catalog Colors

Suffix Key

N	- No Molding
M13S	- M13 Satin Molding
M35S	- M35 Satin Molding
PLT	- Platinum

Shelf Depth	Downslope		
	Flat	17°	30°
7"	300 lbs	300 lbs	125 lbs
10" - 19"	500 lbs	250 lbs	250 lbs
20" - 25"	500 lbs	250 lbs	125 lbs
28" & 31"	400 lbs	200 lbs	100 lbs

Lbs. evenly distributed.