

| You are in: Lozier > Products > Mobile Two-Way Merchandiser (Light Duty)

Mobile Two-Way Merchandiser (Light Duty)

Part Number:



The Two-Way Merchandiser Light Duty is available with three styles: S-Style Base Deck, Fully Framed Base, and No Base.

Product Details:

- Slotted steel frame accepts most standard Lozier Shelves & Accessories
- Available with Levelers or 2" locking Casters
- Available with Pegboard or Marteck® back panels
- Three styles: S-Style Base Deck, Fully Framed Base, and No Base
- All components sold separately



• **Base unit consists of (Ordered Separately):**

A -(1) Light Duty Two-Way Merchandiser Legs (leveler or caster) or Deck Frame

B - (2) Two-Way style Base Decks or Frame Inserts

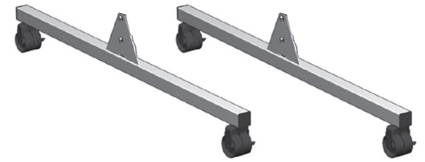
C -(1) Light Duty Two-Way Merchandiser Panel

- Optional Accessories:**
- Tilt-in Shelves (TL_N)
 - Light Duty Two-Way Merchandiser Wire Wing Panel

How to Order

Mobile Two-Way Merchandiser (Light Duty) Leg Kit

- Installs with Two-Way Merchandiser Panel
- Available with levelers or casters
- Can be used with no base deck or with Two-Way S-Style Deck
- Sold as a pair



Product Options and Numbers

Example Part #: **2W LK 1010 PLT**

Two-Way Merchandiser: **2W**

Leg Style: CK, **LK**

Depth: **1010**, 1013, 1016, 1313, 1316, 1616

Standard Finishes: **PLT**, Optional Catalog Colors

Suffix Key

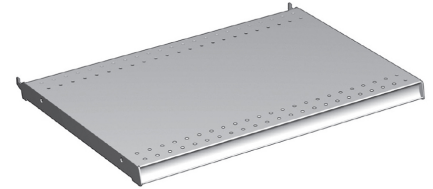
PLT	- Platinum
LAX	- Platinum Laminate
LK	- Leveler Kit
CL	- Caster Kit
M13S	- M13 Satin Molding
MR1S	- MR1 Satin Molding
M35S	- M35 Satin Molding

N

- No Molding

Mobile Two-Way Merchandiser (Light Duty) S-Series Base Deck

- Can be retro-fitted to No Base 2 Way Merchandiser
- 1/4" perforations for clip on accessories
- Aluminum tag molding can be ordered installed
- Available painted or laminated
- Laminate covered Deck must include MR1 molding



Product Options and Numbers

Example Part #: **2W SD 2 10 N PLT**

Two-Way: **2W**

S-Series Base Deck: **SD**

Width: **2'**, 30"

Depth: **10"**, 13", 16"

Molding: **N**, M13S, M13P, M35S, M35P

Standard Deck Finish: **PLT**, Optional Catalog Colors

Standard Molding Finish: S, P

Finish When Ordering Painted Molding : 34K, Please Contact Product Management for multiple finish codes

Suffix Key

N	- No Molding
M13P	- M13 Painted Molding
M13S	- M13 Satin Molding
M35P	- M13 Painted Molding
M35S	- M35 Satin Molding
S	- Satin Molding
P	- Painted Molding
PLT	- Platinum

Mobile Two-Way Merchandiser (Light Duty) Deck Frame

- Installs with Two-Way Merchandiser Panel
- Available with levelers or casters
- Does not include Two-Way frame insert

Product Options and Numbers

Example Part #: **2WDF 2 1010 L PLT**

Two-Way Merchandiser Deck Frame: **2WDF**

Width: **2'**, 30"

Depth: **1010**, 1313, 1616

Base Style: **L**, C

Standard Finish: **PLT**, Optional Catalog Colors



Suffix Key

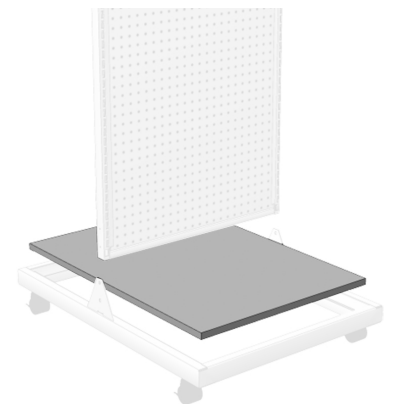
L	- Leveler
C	- Caster
PLT	- Platinum

Mobile Two-Way Merchandiser (Light Duty) Frame Insert

- Installs with Two-Way Merchandiser Deck Frame

Product Options and Numbers

Example Part #: **2WFDI 2 20 MA1**



Two-Way Merchandiser Frame Insert: **2WFDI**

Width: 2', 30"

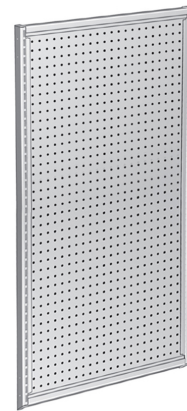
Depth: 20", 26", 32"

Standard Finishes: **MA1**, MA5, MB5, Optional Catalog Colors

Suffix Key	
MA1	- Platinum Melamine
MA5	- White Melamine
MB5	- Silver Melamine

Mobile Two-Way Merchandiser (Light Duty) Panel

- Frames are slotted both sides to accept most standard Lozier shelves and accessories
- Installs with Two-Way Merchandiser Leg Kit or Fully Framed Base



Product Options and Numbers

Example Part #: **2WP 48 24 P P 29T**

Two-Way Merchandiser Panel: **2WP**

Height: 48", 54"

Width: 24", 30"

Panel Style, Side A: **P**, M

Panel Style, Side B: **P**, M

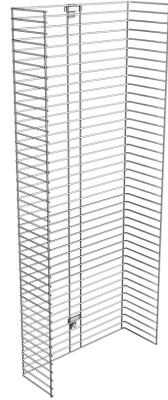
Finish: **29T**, Contact Product Management for multiple finish codes

This product requires a color selection for: Panel Side A finish, Panel Side B finish, and Frame finish. Please view Optional Catalog Colors.

Suffix Key	
P	- Pegboard
M	- Marteck®
29T	- Platinum (PLT) Panel Side A, Platinum (PLT) Panel Side B, and Platinum (PLT) Frame

Mobile Two-Way Merchandiser (Light Duty) Wire-Wing-Panel

- 23 3/4"W x 5"D
- Mounts centered on 2-Way Frame
- No loose hardware
- Accepts Wire Wing Panel Hooks
- Carton Rounding: 2



Product Options and Numbers

Example Part #: **2W WWP 54 2 PLT**

Two-Way Merchandiser: **2W**

Wire Wing Panel: **WWP**

Height: 48", **54"**

Width: **2'**

Standard Finish: **PLT**, QP3, Optional Catalog Colors

Suffix Key

PLT	- Platinum
QP3	- Powder Chrome