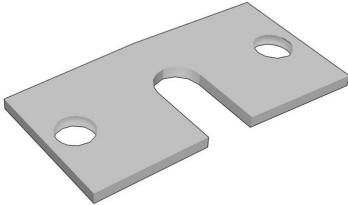


| You are in: [Lozier](#) > [Products](#) > [Base Bracket Anchor Plate](#)

Base Bracket Anchor Plate

Part Number: **Part Number: DC1242**



Base Bracket Anchor Plates are required when your fixture exceeds height-to-depth ratio limits and for fixtures over 5' tall in certain seismic zones. The plates secure each Leveling Leg to the floor using anchor bolts.

Product Details:

- Use Anchor Plates when shelving unit exceeds height-to-depth ratio limits
- Accepts 1/4" or 3/8" diameter anchor bolts (not included)
- Holes are 7/16" diameter
- Required for shelving over 5' H in certain seismic zones
- Secures leveling leg to floor

Product Options and Numbers

Part #: **DC1242** **GLV**

Base Bracket Anchor Plate: **DC1242**

Standard Finish: **GLV**

Suffix Key

GLV

- Galvanized