

| You are in: [Lozier](#) > [Products](#) > [Back Rails \(Slotwall\)](#)

Back Rails (Slotwall)

Part Number: R



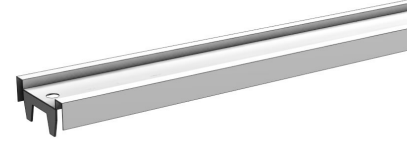
Product Details:

- Slotwall Island and Wall Sections require at least one Top, Slotwall Center, and Heavy Duty Bottom Rail
- Order one Slotwall Center Rail for 36" - 66"H Uprites
- Order two Slotwall Center Rails for 72" - 144"H Uprites
- Use one Slotwall Center Rail on 12" - 48"H Extension Uprites

How to Order

Top Rail

- All Island and Wall Sections require one Top, Center and Bottom Rail
- 2' and 30" sections use two Top Rails to make a Splicer Rail
- Electrical knockouts included on all Rails



Product Options and Numbers

Example Part #: **R 4 T PLT**

Rails: **R**

Width: 2', 30", 3', **4'**

Top Rail: **T**

Standard Finish: **PLT**, Optional Catalog Colors

Suffix Key

PLT - Platinum Color

Slotwall Center Rail

- Slotwall Island and Wall Sections require at least one Top, Slotwall Center, and Heavy Duty Bottom Rail
- Order one Slotwall Center Rail for 36" - 66"H Uprites
- Order two Slotwall Center Rails for 72" - 144"H Uprites
- Use one Slotwall Center Rail on 12" - 48"H Extension Uprites



Product Options and Numbers

Example Part #: **R 4 SC PLT**

Rails: **R**

Width: 2', 30", 3', **4'**

Slotwall Center Rail: **SC**

Standard Finish: **PLT**

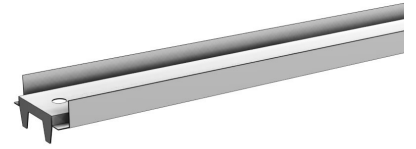
Suffix Key

PLT

- Platinum Color

Bottom Rail

- All Island and Wall Sections require one Top, Center and Bottom Rail
- Electrical knockouts included on all Rails
- Also used for 2' and 30" Slotwall Backs



Product Options and Numbers

Example Part #: **R 4 B PLT**

Rails:**R**

Width: 2', 30", 3', 4'

Bottom Rail: **B**

Standard Finish: **PLT**, Optional Catalog Colors

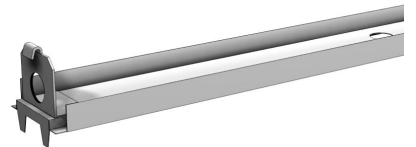
Suffix Key

PLT

- Platinum Color

Heavy Duty Bottom Rail

- Slotwall Island and Wall Sections require at least one Top, Slotwall Center, and Heavy Duty Bottom Rail
- For use with 3' and 4' Slotwall Backs only
- For 2' and 30" Slotwall Backs use Bottom Rail



Product Options and Numbers

Example Part #: **R 4 HDB PLT**

Rails:**R**

Width: 3', 4'

Heavy Duty Bottom Rail: HDB

Standard Finish: PLT, Optional Catalog Colors

Suffix Key	
PLT	- Platinum Color