

| You are in: [Lozier](#) > [Products](#) > [Hardboard Back Rails](#)

Hardboard Back Rails

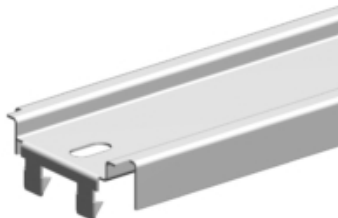
Part Number:



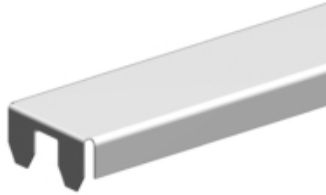
Product Details:

- All Island and Wall Sections require one Top, Center and Bottom Rail
- 78"H - 144"H Backs require one Splicer Rail
- 96"H-144"H Backs require two Center Rails
- Splicer rail is not available in 2' or 30"
- 2' and 30" sections use two Top Rails to make a Splicer Rail
- Center Rail finish is always N/A because it's hidden
- Electrical knockouts included on all Rails

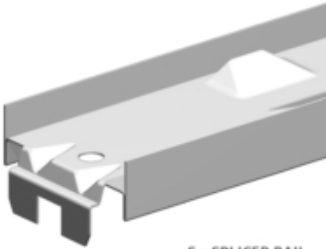
How to Order



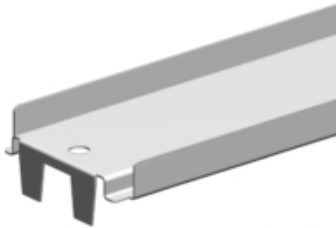
T = TOP RAIL



C = CENTER RAIL



S = SPLICER RAIL



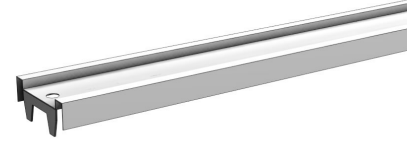
B = BOTTOM RAIL

Suffix Key

PLT	- Platinum Color
T	- Top Rail
C	- Center Rail
S	- Splicer Rail
B	- Bottom Rail

Top Rail

- All Island and Wall Sections require one Top, Center and Bottom Rail
- 2' and 30" sections use two Top Rails to make a Splicer Rail
- Electrical knockouts included on all Rails



Product Options and Numbers

Example Part #: **R 4 T PLT**

Rails:R

Width: 2', 30", 3', 4'

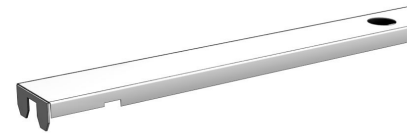
Top Rail: T

Standard Finish: **PLT**, Optional Catalog Colors

Suffix Key	
PLT	- Platinum Color

Center Rail

- All Island and Wall Sections require one Top, Center and Bottom Rail
- 96"H-144"H Backs require two Center Rails
- Center Rail finish is always N/A because it's hidden
- Electrical knockouts included on all Rails



Product Options and Numbers

Example Part #: **R 4 C N/A**

Rails:R

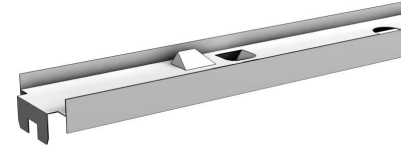
Width: 2', 30", 3', 4'

Center Rail: C

Standard Finish: **N/A**

Splicer Rail

- All Island and Wall Sections require one Top, Center and Bottom Rail
- 78"H - 144"H Backs require one Splicer Rail
- Splicer rail is not available in 2' or 30"
- Use two top rails for splicer rail on 2' and 30" wide sections.
- Electrical knockouts included on all Rails



Product Options and Numbers

Example Part #: **R 4 S PLT**

Rails:R

Width: 3', 4'

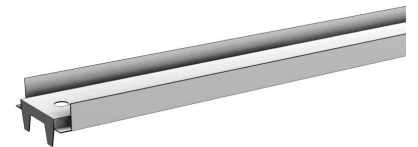
Splicer Rail: **S**

Standard Finish: **PLT**, Optional Catalog Colors

Suffix Key	
PLT	- Platinum Color

Bottom Rail

- All Island and Wall Sections require one Top, Center and Bottom Rail
- Electrical knockouts included on all Rails
- Also used for 2' and 30" Slotwall Backs



Product Options and Numbers

Example Part #: **R 4 B PLT**

Rails:R

Width: 2', 30", 3', 4'

Bottom Rail: B

Standard Finish: PLT, Optional Catalog Colors

Suffix Key

PLT - Platinum Color