

| You are in: Lozier > Products > Slotwall Back Rails

# Slotwall Back Rails

Part Number:

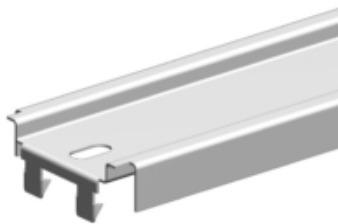


## Product Details:

- Slotwall Island and Wall Sections require at least one Top, Slotwall Center, and Heavy Duty Bottom Rail
- Order one Slotwall Center Rail for 36" - 66"H Uprites
- Order two Slotwall Center Rails for 72" - 144"H Uprites
- Use one Slotwall Center Rail on 12" - 48"H Extension Uprites

## How to Order

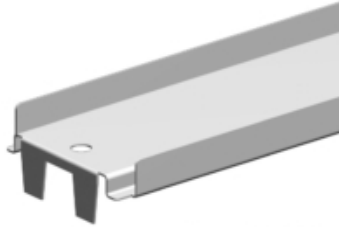
---



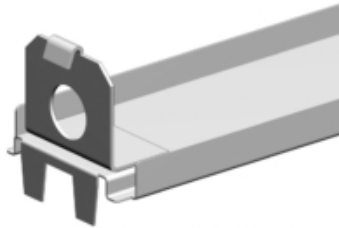
T = TOP RAIL



SC = SLOTWALL CENTER RAIL



B = BOTTOM RAIL



HDB = HEAVY DUTY BOTTOM RAIL

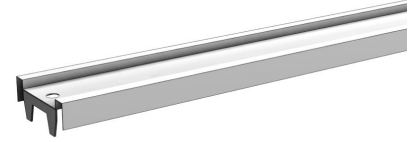
### Suffix Key

<b>PLT</b>	- Platinum Color
<b>T</b>	- Top Rail
<b>SC</b>	- Slotwall Center Rail
<b>B</b>	- Bottom Rail
<b>HDB</b>	- Heavy Duty Bottom Rail

## Top Rail

---

- All Island and Wall Sections require one Top, Center and Bottom Rail
- 2' and 30" sections use two Top Rails to make a Splicer Rail
- Electrical knockouts included on all Rails



## Product Options and Numbers

Example Part #: **R 4 T PLT**

**Rails:** R

**Width:** 2', 30", 3', 4'

**Top Rail:** T

**Standard Finish:** PLT, Optional Catalog Colors

### Suffix Key

PLT - Platinum Color

## Slotwall Center Rail

- Slotwall Island and Wall Sections require at least one Top, Slotwall Center, and Heavy Duty Bottom Rail
- Order one Slotwall Center Rail for 36" - 66"H Uprites
- Order two Slotwall Center Rails for 72" - 144"H Uprites
- Use one Slotwall Center Rail on 12" - 48"H Extension Uprites



## Product Options and Numbers

Example Part #: **R 4 SC PLT**

**Rails:** R

**Width:** 2', 30", 3', 4'

**Slotwall Center Rail:** SC

**Standard Finish:** PLT

### Suffix Key

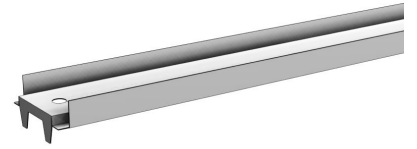
PLT

- Platinum Color

## Bottom Rail

---

- All Island and Wall Sections require one Top, Center and Bottom Rail
- Electrical knockouts included on all Rails
- Also used for 2' and 30" Slotwall Backs



### Product Options and Numbers

Example Part #: **R 4 B PLT**

Rails:**R**

Width: 2', 30", 3', 4'

Bottom Rail: **B**

Standard Finish: **PLT**, Optional Catalog Colors

#### Suffix Key

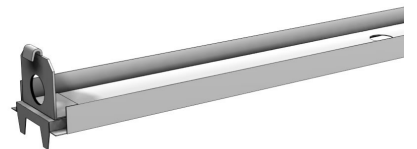
PLT

- Platinum Color

## Heavy Duty Bottom Rail

---

- Slotwall Island and Wall Sections require at least one Top, Slotwall Center, and Heavy Duty Bottom Rail
- For use with 3' and 4' Slotwall Backs only
- For 2' and 30" Slotwall Backs use Bottom Rail



### Product Options and Numbers

Example Part #: **R 4 HDB PLT**

Rails:**R**

**Width: 3', 4'**

**Heavy Duty Bottom Rail: HDB**

**Standard Finish: PLT, Optional Catalog Colors**

Suffix Key

PLT - Platinum Color