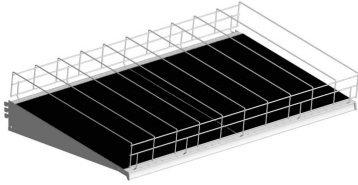


| You are in: Lozier > Products > Gravity Feed Display

Gravity Feed Display

Part Number:



Product Details:

- Drop-in, single position, 8° downslant brackets
- Silicone impregnated surface mat (two-piece)
- Wire divider fits most two-liter bottles or spray cans
- Aluminum tag molding can be installed (specify molding type & finish)
- Nominal Gravity Feed Shelf depth should not exceed nominal Base Deck depth
- Gravity Shelf, Divider and Mats ordered separately

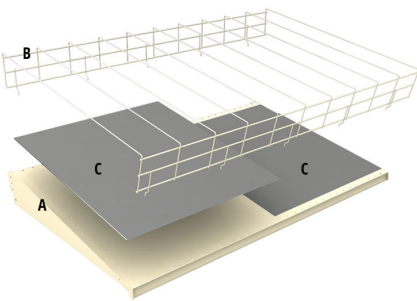
NOMINAL DEPTH	NOMINAL WIDTH	NUMBER OF FACINGS	BOTTLES/CANS
TWO - LITER BOTTLES			
48"	41-7/16"	39-17/32"	46-1/8"
54"	47-7/16"	45-17/32"	52-1/8"
60"	53-7/16"	51-17/32"	58-1/8"
66"	59-7/16"	57-17/32"	64-1/8"
72"	65-7/16"	63-17/32"	70-1/8"

78"	71-7/16"	69-17/32"	76-1/8"
78"	71-7/16"	69-17/32"	76-1/8"
78"	71-7/16"	69-17/32"	76-1/8"
78"	71-7/16"	69-17/32"	76-1/8"
78"	71-7/16"	69-17/32"	76-1/8"
TWO - LITER BOTTLES			
78"	71-7/16"	69-17/32"	76-1/8"
78"	71-7/16"	69-17/32"	76-1/8"
78"	71-7/16"	69-17/32"	76-1/8"
78"	71-7/16"	69-17/32"	76-1/8"

How to Order

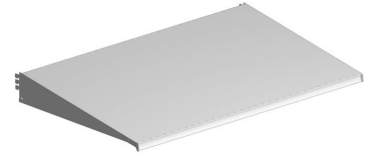
ORDER SEPARATELY

- A- Shelf
- B- Wire Divider
- C- Mat



Gravity Feed Shelf

- Fixed 8° downslant
- Available 3' or 4' wide
- Available 19", 22", 25", 28", 31" deep
- Holes to accept two-liter beverage or spray paint wire dividers



Product Options and Numbers

Example Part #: **BS 4 22 N PLT**

Gravity Feed Shelf: BS

Width: 3', 4'

Depth: 19", 22", 25", 28", 31" (Paint 19" & 22" only)

Molding: N, M13P, M13S, M35P, M35S

Standard Finish: PLT, Optional Catalog Colors

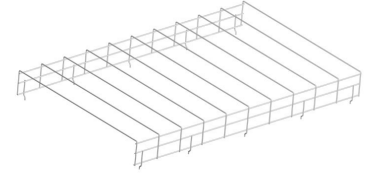
Finish When Ordering Painted Molding : 34K, Please contact Product Management for multiple finish codes

Suffix Key

N	- No Molding
M13P	- M13 Painted Molding
M13S	- M13 Satin Molding
M35P	- M13 Painted Molding
M35S	- M35 Satin Molding
PLT	- Platinum
34K	- Platinum Body & Platinum Painted Molding

Gravity Feed Wire Dividers

- Accepts most two-liter bottles or 2.62" diameter spray paint cans
- Available in all sizes to match Gravity Feed Shelf
- Installs in Gravity Feed Shelf holes without hardware
- Robust wire construction



Product Options and Numbers

Example Part #: **BDIV 4 22 L2 PLT**

Divider: **BDIV**, PDIV

Width: 3', **4'**

Depth: 19", **22"**, 25", 28", 31" (Paint 19" & 22" only)

Style: **L2**, Omit for PDIV

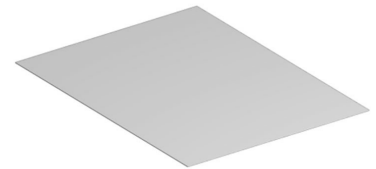
Standard Finish: **PLT**, Optional Catalog Colors

Suffix Key

L2	- 2 liter
BDIV	- Beverage Divider
PDIV	- Paint Divider

Gravity Feed Mats

- Two (2) required per Gravity Feed Shelf
- Order two (2) 18"W for nominal 3' and two (2) 2'W for nominal 4' shelves in the same respective depth
- Silicone impregnated surface enhances gravity feed
- Ribbed surface minimizes merchandise contact points and reduces friction



Product Options and Numbers

Example Part #: **BMAT 2 25 XG9**

Gravity Feed Mat: **BMAT**

Width: 18", 2'

Depth: 19", 22", 25", 28", 31"

Standard Finish: XG9, XH5

Suffix Key	
XG9	- White
XH5	- Black