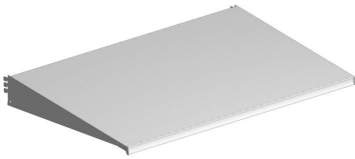


| You are in: [Lozier](#) > [Products](#) > [Gravity Feed Shelf](#)

# Gravity Feed Shelf

Part Number: **Part Number: BS**



## Product Details:

- Fixed 8° downslant
- Available 3' or 4' wide
- Available 19", 22", 25", 28", 31" deep
- Holes to accept two-liter beverage or spray paint wire dividers

## Product Options and Numbers

---

Example Part #: **BS 4 22 N PLT**

**Gravity Feed Shelf: BS**

**Width:** 3', **4'**

**Depth:** 19", **22"**, 25", 28", 31" (Paint 19" & 22" only)

**Molding:** **N**, M13P, M13S, M35P, M35S

**Standard Finish:** **PLT**, Optional Catalog Colors

**Finish When Ordering Painted Molding : 34K**, Please contact Product Management for multiple finish codes

#### Suffix Key

<b>N</b>	- No Molding
<b>M13P</b>	- M13 Painted Molding
<b>M13S</b>	- M13 Satin Molding
<b>M35P</b>	- M13 Painted Molding
<b>M35S</b>	- M35 Satin Molding
<b>PLT</b>	- Platinum
<b>34K</b>	- Platinum Body & Platinum Painted Molding