

| You are in: Lozier > Products > High Capacity System

High Capacity System

Part Number:

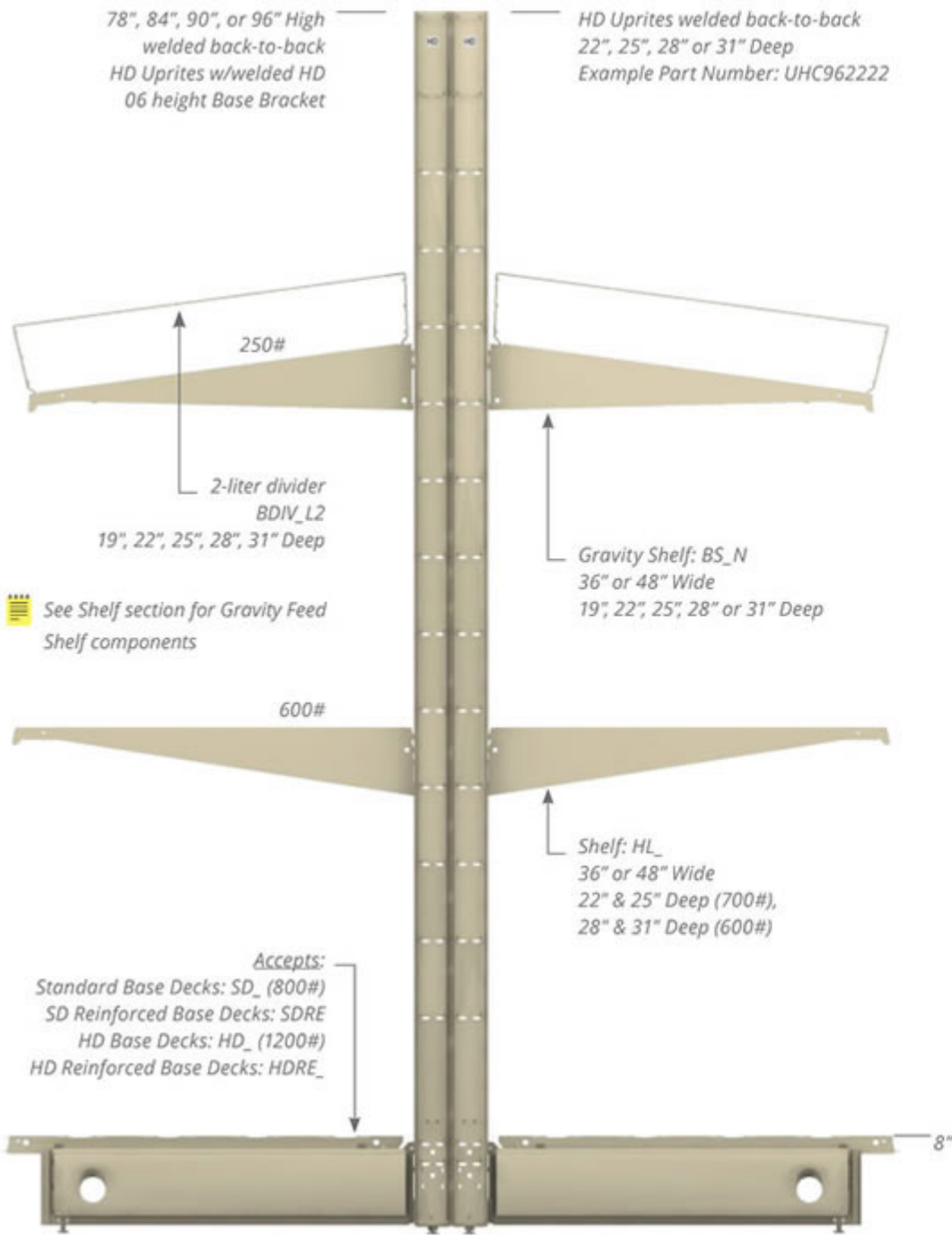


High Capacity Wall or Island Systems provide a variety of display options for heavy and dense merchandise.

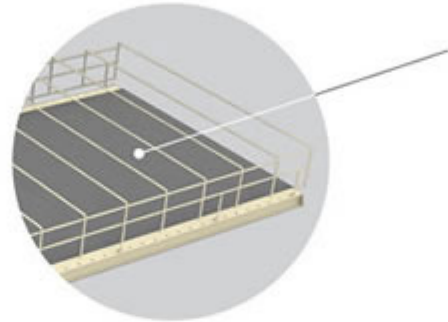
Product Details:

- Excellent for beverage products or other heavy, dense merchandise
- Uprites and Base Brackets are welded assembly and available in 06 base height only
- Overall Uprite depth is 5 3/4" (back to back welded HD Uprites)
- System accepts standard rails & backs on one (1) or two (2) sides
 - Two sets of rails required if backs are installed flush both sides
- Available in 78", 84", 90", 96" heights and 22", 25", 28", 31" depths
 - Gondola available same depth both sides only
- Wall System accepts Standard, Heavy Duty, 06, or Low Base Bracket on opposite side with respective unbalanced capacity

High Capacity Uprite unbalanced load capacity - 35,000 in lbs



Two Heavy Duty Uprites welded back-to-back



Gravity Feed Mats



Welded 06 Base Bracket

Standard Duty R...
H...
HD Rei...

SD or H...
installed on...
Wall and...

How to Order

1. Order desired run quantity 06 Base Island (IS) or Wall (WS)
2. Order one (1), Island End (IE) or Wall End (WE)
3. Order one (1) extra UET for each end of the run

4. Order additional set of Top, Bottom, Center, and Splicer Rails if backs will be installed on rear side
5. Delete all run Uprights and Base Brackets
6. Order same quantity of High Capacity Uprights that were deleted in Step 5

Gravity Feed Shelf

- A - Shelf
- B - Wire Divider
- C - Mat

High Capacity Upright

- D - Island Upright
- E - Wall Upright





High Capacity Uprite

- Two (2) HD Uprites welded back-to-back
- Welded HD Base Brackets (06 height)

High Capacity Uprite unbalanced load capacity - 35,000 in lbs

*Note: Side A & Side B Depth must be same for Island
For order quantity less than 6 order QTY 1 WMB781100 N/A*

Product Options and Numbers

Example Part #: **UHC 96 22 PLT**

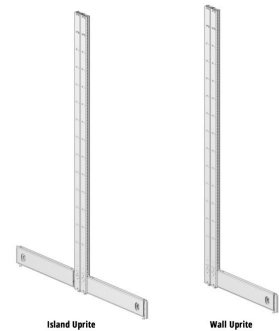
Uprite High Capacity: UHC

Height: 78", 84", 90", **96"**

Depth Side A: **22"**, 25", 28", 31"

Depth Side B: 22", 25", 28", 31", **Omit for Wall**

Standard Finish: **PLT**, Optional Catalog Colors



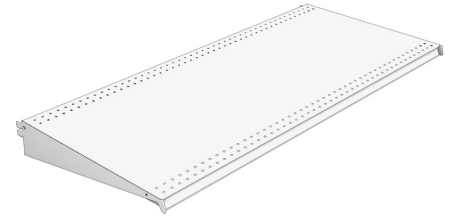
Suffix Key

PLT

- Platinum Paint

HL Shelf

- Heavy Duty option
- Taller bracket profile allows 40% higher load capacity
- Tag moldings and perforations similar to TL Style
- Can order with Aluminum Tag Moldings installed
- Drop-in bracket design
- 600 lbs evenly distributed (16", 19", 28", 31"D)
- 700 lbs evenly distributed (22" & 25"D)



Product Options and Numbers

Example Part #: **HL 4 19 N PLT**

HL Shelf: **HL**

Width: 3', **4'**

Depth: 16", **19"**, 22", 25", 28", 31"

Molding: **N**, M13S, M35S

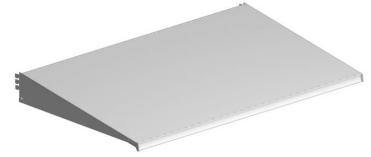
Standard Finish: **PLT**, Optional Catalog Colors

Suffix Key

N	- No Molding
M13S	- M13 Satin Molding
M35S	- M35 Satin Molding
PLT	- Platinum

Gravity Feed Shelf

- Fixed 8° downslant
- Available 3' or 4' wide
- Available 19", 22", 25", 28", 31" deep
- Holes to accept two-liter beverage or spray paint wire dividers



Product Options and Numbers

Example Part #: **BS 4 22 N PLT**

Gravity Feed Shelf: BS

Width: 3', 4'

Depth: 19", **22"**, 25", 28", 31" (Paint 19" & 22" only)

Molding: **N**, M13S, M35S (Ref aluminum tag molding)

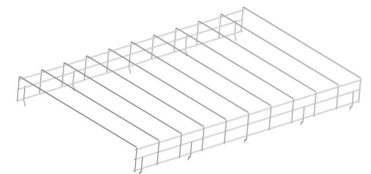
Standard Finish: **PLT**, Optional Catalog Colors

Suffix Key

PLT	- Platinum Paint
N	- No Molding
M35S	- Satin Molding
M13S	- Satin Molding

Gravity Feed Wire Dividers

- Two (2) required per Gravity Feed Shelf
 - Order two (2) 18"W for nominal 3' and two (2) 2'W for nominal 4' shelves in the same respective depth
- Silicone impregnated surface enhances gravity feed
- Ribbed surface minimizes merchandise contact points and reduces friction



Product Options and Numbers

Example Part #: **BDIV 4 22 L2**

Divider: **BDIV**, PDIV

Width: 3', **4'**

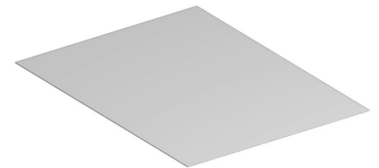
Depth: 19", **22"**, 25", 28", 31" (Paint 19" & 22" only)

Style: **L2**, Omit for paint

Suffix Key	
L2	- 2 liter
BDIV	- Beverage Divider
PDIV	- Paint Divider

Gravity Feed Mats

- Two (2) required per Gravity Feed Shelf
- Order two (2) 18"W for nominal 3' and two (2) 2'Wfor nominal 4' shelves in the same respective depth
- Silicone impregnated surface enhances gravity feed
- Ribbed surface minimizes merchandise contact points and reduces friction



Product Options and Numbers

Example Part #: **BMAT 2 25 XG9**

Gravity Feed Mat: **BMAT**

Width: 18", **2'**

Depth: 19", 22", **25"**, 28", 31"

Standard Finish: **XG9**,XG4

Suffix Key	
XG9	- White
XG4	- Black