

| You are in: [Lozier](#) > [Products](#) > [Multi-Function](#)

# Multi-Function

Part Number: **MF**



Add durability to your existing Wall or Island Gondola with Multi-Function components. Order one Multi-Function Upright Assembly per Multi-Function Shelving System plus one for the end, the number of Shelf Assemblies required and optional Particleboard Deck assemblies. Accessories available to increase functionality of your unit.

## Product Details:

- Attaches to new or existing Shelving runs
- Designed for hand loading only

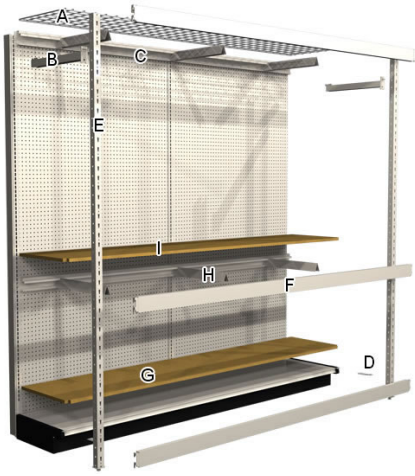
## ORDERING INSTRUCTIONS

Add to Island and Wall Sections as follows:

1. Determine height of Island/Wall Uprights and depth of Base Decks
2. Order one Multi-Function Upright Assembly per desired Multi-Function Shelving Section, plus one for the end; repeat for other side of Island Section
3. Order Multi-Function Shelf Assemblies as required. Shelf depth is same as Base Deck depth
4. Order optional Particleboard Multi-Function Deck Assemblies, if desired. Particleboard Deck rests on top of Steel Display Shelving Deck

## How to Order

---



**WARNING:** Multi-Function Beams are intended to be used with Multi-Function Shelf Supports. If Shelf Supports are not installed then the beams **MUST** utilize a Widespan Multi-Function Beam Locking Clip (WS1291 or WS9111) depending on the beam location. Failure to do this could allow the Beam to become disengaged causing product damage or personal injury.

## **COMPONENTS**

- A** - Wire Grid Shelf
- B** - Uprite Brace
- C** - Back Beam
- D** - Uprite Deck Connector
- E** - Multi-Function Uprite
- F** - Front Beam
- G** - Particleboard Deck
- H** - Shelf Support
- I** - Particleboard Shelf

## **Multi-Function Uprite Assemblies**

---

## INCLUDES

- Multi-Function Uprite
- Uprite Brace
- Uprite/Deck Connector (MF1151)



## IF ORDERING DOOR KITS:

- Allow 6" for Top Beam Uprite Brace clearance
- Delete MF1151 from the Uprite Assembly and add MF4291

## CAPACITY:

- Standard Duty MF Post and Gondola Uprite combined - 4,000 lbs max.
- Reinforced MF Post and Gondola Uprite combined - 5,000 lbs max.

## Product Options and Numbers

Example Part #: **MFUA 84 22 PLT PLT**

**Multi-Function Uprite Assembly: MFUA**

**Uprite Height:** 72", 78", **84"**, 90", 96"

**Steel Base Deck Depth:** 13", 16", 19", **22"**, 25", 28", 31"

**Add Reinforced Uprite:** RE (required for all MF Uprites above 84"H), **Omit** if not required

**Uprite and Brace Standard Finish:** **PLT**, Optional Catalog Colors

**Deck Connector Standard Finish:** **PLT**, Optional Catalog Colors

### Suffix Key

**PLT** - Platinum

## Multi-Function Uprite

---

- Post face slotted, allows shelf adjustment 2" on center
- Top Caps included on each Upright
- Top Beam can be installed flush with top of Upright
- Capacities based on use with Lozier Display Upright
- Extra Top Caps can be ordered
- Standard Duty MF Post and Gondola Upright combined - 4,000 lbs max
- Reinforced MF Post and Gondola Upright combined - 5,000 lbs max



## Product Options and Numbers

Example Part #: **MFU 84 PLT**

**Multi-Function Upright :** **MFU**

**Height:** 72", 78", **84"**, 90", 96"

**Add Reinforced Upright:** RE (required for all MF Uprights above 84"H), **Omit** if not required

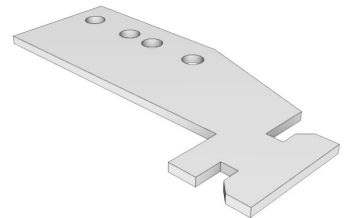
**Standard Finish:** **PLT**, Optional Catalog Colors

### Suffix Key

<b>PLT</b>	- Platinum
------------	------------

## Multi-Function Upright to Deck Connector

- Rotates into back of post and bolts to display Deck
- Hardware included
- Two styles available
- Two positions for clearance when using M35 or M55 Aluminum Deck molding



## Product Options and Numbers

Example Part #: **MF1151 PLT**

Without Door Kits: **MF1151**

With Door Kits: **MF4291**

Standard Finish:**PLT**,Optional Catalog Colors

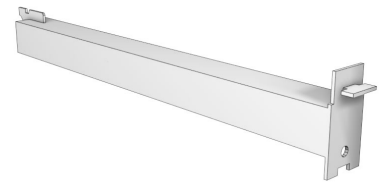
### Suffix Key

**PLT** - Platinum

## Multi-Function Upright Brace

---

- Attaches to post in field without tools or hardware
- Optional bolt included with each Brace



## Product Options and Numbers

Example Part #: **MFUB 22 PLT**

Multi-Function Upright Brace: **MFUB**

Base Deck Depth:13", 16", 19",**22"**, 25", 28", 31"

Standard Finish: **PLT**,Optional Catalog Colors

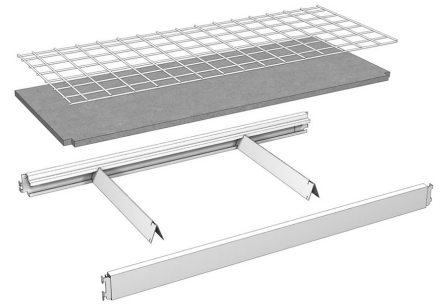
### Suffix Key

**PLT** - Platinum

## Multi-Function Shelf Assemblies

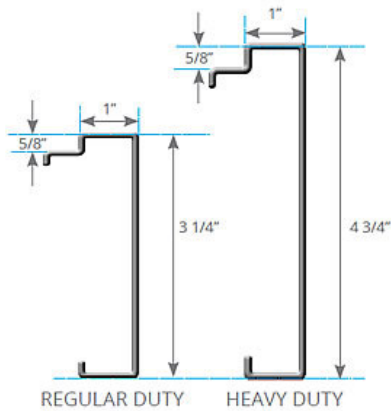
---

- Available in two types: Regular Duty and Heavy Duty
- Two Shelf styles available: Particleboard or Wire Grid
- If Shelf Supports are not used, Beam Locking Clips (WS1291 or WS9111) are required
- Regular Duty: 1,600 - 3,000 lbs evenly distributed
- Heavy Duty: 3,000 lbs max evenly distributed



## INCLUDES

- 1 Multi-Function Front Beam
- 1 Multi-Function Back Beam
- 1 Multi-Function Shelf, Particleboard or Wire Grid
- Number of Shelf Supports required for customer application



## Product Options and Numbers

Example Part #: **MF SA 22 96 2 RD PLT PLT N/A**

**Multi-Function:** MF

**Shelf Type:** SA, WA

**Shelf Depth:** 13", 16", 19", **22"**, 25", 28", 31"

**Section Width:** 36", 48", 72", 84", **96"**

**Number of Shelf Supports:** **2,3, 4**

Beam and Shelf Supports: **RD,HD**

Beam Standard Finish: **PLT**,Optional Catalog Colors

Shelf Support Standard Finish: **PLT**,Optional Catalog Colors

Shelf Standard Finish: **N/A**,S04, ZNC

#### Suffix Key

<b>SA</b>	- Particleboard Shelf
<b>WA</b>	- Wire Grid Shelf
<b>RD</b>	- Regular Duty Beam & Shelf Supports
<b>HD</b>	- Heavy Duty Beam & Shelf Supports
<b>PLT</b>	- Platinum
<b>N/A</b>	- No Finish
<b>S04</b>	- Seal Coated
<b>ZNC</b>	- Zinc Wire Grid

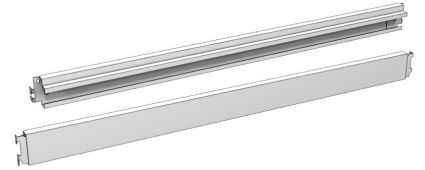
#### Multi-Function Shelf Capacity (Evenly Distributed Load in Lbs)

Shelf Depth	Section Width (Beam Length)	Number of Regular Duty Shelf Supports with Regular Duty Beams			Number of Heavy Duty Shelf Supports with Heavy Duty Beams	
		2	3	4	2	3
Up to 31" Deep		1,600	2,400	3,000	3,000	-
	36"	1,600	2,400	3,000	3,000	-
	48"	1,600	2,000	2,400	-	3,000
	72"	1,600	1,800	2,000	-	3,000
	84"	1,600	1,600	1,600	-	3,000
	96"	1,600	1,600	1,600	-	3,000

#### Multi-Function Front/Back Beams

---

- Heavy Duty Beams require Heavy Duty Shelf Supports



## Product Options and Numbers

Example Part #: **MF FB 96 PLT**

**Multi-Function Beam: MF**

**Beam Type: FB, BB**

**Section Width: 36", 48", 72", 84", 96"**

**Heavy Duty Beams: HD, Omit** if not required

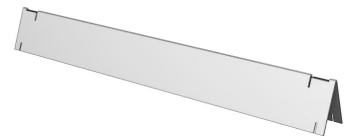
**Standard Finish: PLT**, Optional Catalog Colors

Suffix Key	
<b>FB</b>	- Front Beam
<b>BB</b>	- Back Beam
<b>PLT</b>	- Platinum

## Multi-Function Shelf Supports

---

- Heavy Duty Shelf Supports require Heavy Duty Beams



## Product Options and Numbers

Example Part #: **MFWSS 22 PLT**

**Multi-Function Shelf Support: MFWSS**



**Base Deck Depth:** 13", 16", 19", **22"**, 25", 28", 31"

**Heavy Duty Shelf Supports:**HD,**Omit**if not required

**Standard Finish:** **PLT**,Optional Catalog Colors

#### Suffix Key

**PLT** - Platinum

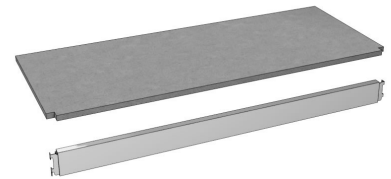
## Multi-Function Deck Assembly

---

- Regular Duty or Heavy Duty Beam available

### INCLUDES

- 1 Multi-Function Front Beam
- 1 Multi-Function Particleboard Deck



### Product Options and Numbers

Example Part #: **MFDA 22 96 HD PLT N/A**

**Multi-Function Deck Assembly:** **MFDA**

**Base Deck Depth:**13", 16", 19", **22"**, 25", 28", 31"

**Section Width:**36", 48", 72", 84",**96"**

**Beam Style:**RD,**HD**

**Beam Standard Finish:** **PLT**,Optional Catalog Colors

**Deck Standard Finish:** **N/A**,S04

#### Suffix Key

**RD** - Regular Duty Beams

**HD** - Heavy Duty Beams

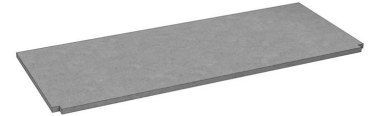
**PLT** - Platinum

N/A	- No Finish
S04	- Seal Coated

## Multi-Function Shelves and Decks

---

- One style fits both Regular Duty and Heavy Duty Beams
- Evenly distributed load up to 3,000 lbs (Dependent on Beam style and number of Shelf Supports)



### PARTICLEBOARD SHELF (S)/DECK (D)

- 5/8" industrial grade particleboard
- Pre-cut to fit Multi-Function sections
- Front corners notched to fit around MF Uprites

### WIRE GRID (WG)

- 3 x 3 heavy gauge wire mat
- One piece construction on all sizes
- Continuous perimeter wire
- Fireproof
- Light penetration
- Water from sprinklers can flow through
- Cleanliness
- Available in Zinc coated wire

## Product Options and Numbers

Example Part #: **MF S 22 96 N/A**

**Multi-Function:** MF

**Shelf/Deck Style:** S,D, WG

**Base Deck Depth:** 13", 16", 19", **22"**, 25", 28", 31"

**Multi-Function Section Width:**36", 48", 72", 84",**96"**

**Standard Finish:** **N/A**,S04, ZNC

Suffix Key	
<b>S</b>	- Particleboard Shelf
<b>D</b>	- Particleboard Deck
<b>WG</b>	- Wire Grid Shelf
<b>N/A</b>	- No Finish
<b>S04</b>	- Seal Coated
<b>ZNC</b>	- Zinc Wire Grid