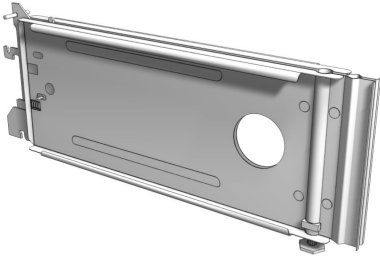


| You are in: [Lozier](#) > [Products](#) > [Spring Locking Base Bracket](#)

# Spring Locking Base Bracket

Part Number: **BB**



Base Bracket serves as the foot of your Wall or Island section, locking into the Upright using an integral spring latch.

## Product Details:

- Features 2" conduit hole for greater electrical access
- Includes leveling legs for uneven flooring
- Install straight in using integral spring latch

## NOTE

Actual Bracket length is 3" less than nominal Deck depth. Order CHR Base Brackets when using Open Base Fronts. (This is done automatically when section/end part numbers are ordered with OBF's.)

## Product Options and Numbers

---

Example Part #: **BB 13 06 S PTD**

Base Bracket:**BB**

Deck Depth: **13"**, 16", 19", 22", 25", 28", 31"

**Base Height:** 06, LB

**Spring Locking Base Bracket:** S

**Standard Finish:** PTD,Optional CHR

Suffix Key	
06	- 06 Base (8"H)
LB	- Low Base (6"H)
PTD	- Painted Random
CHR	- Charcoal Black