

| You are in: [Lozier](#) > [Products](#) > [Multi-Function](#)

# Multi-Function

Part Number:



Add durability to your existing Wall or Island Gondola with Multi-Function components. Order one Multi-Function Upright Assembly per Multi-Function Shelving System plus one for the end, the number of Shelf Assemblies required and optional Particleboard Deck assemblies. Accessories available to increase functionality of your unit.

## Product Details:

- Attaches to new or existing Shelving runs
- Designed for hand loading only

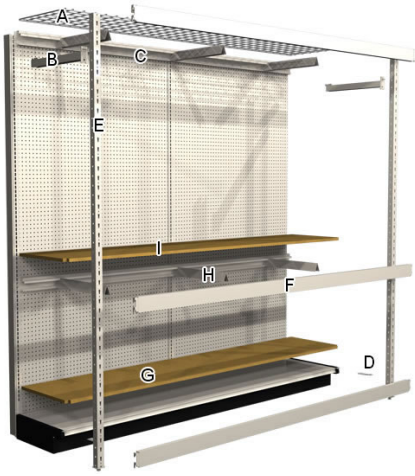
## ORDERING INSTRUCTIONS

Add to Island and Wall Sections as follows:

1. Determine height of Island/Wall Uprights and depth of Base Decks
2. Order one Multi-Function Upright Assembly per desired Multi-Function Shelving Section, plus one for the end; repeat for other side of Island Section
3. Order Multi-Function Shelf Assemblies as required. Shelf depth is same as Base Deck depth
4. Order optional Particleboard Multi-Function Deck Assemblies, if desired. Particleboard Deck rests on top of Steel Display Shelving Deck

## How to Order

---



**WARNING:** Multi-Function Beams are intended to be used with Multi-Function Shelf Supports. If Shelf Supports are not installed then the beams **MUST** utilize a Widespan Multi-Function Beam Locking Clip (WS1291 or WS9111) depending on the beam location. Failure to do this could allow the Beam to become disengaged causing product damage or personal injury.

## **COMPONENTS**

- A** - Wire Grid Shelf
- B** - Uprite Brace
- C** - Back Beam
- D** - Uprite Deck Connector
- E** - Multi-Function Uprite
- F** - Front Beam
- G** - Particleboard Deck
- H** - Shelf Support
- I** - Particleboard Shelf

## **Multi-Function Uprite Assemblies**

---

## INCLUDES

- Multi-Function Uprite
- Uprite Brace
- Uprite/Deck Connector (MF1151)



## IF ORDERING DOOR KITS:

- Allow 6" for Top Beam Uprite Brace clearance
- Delete MF1151 from the Uprite Assembly and add MF4291

## CAPACITY:

- Standard Duty MF Post and Gondola Uprite combined - 4,000 lbs max.
- Reinforced MF Post and Gondola Uprite combined - 5,000 lbs max.

## Product Options and Numbers

### Multi-Function Uprite Assembly

**Height:**72", 78", 84", 90", 96"

**Depth:**13", 16", 19", 22", 25", 28", 31"

**Style:** **Standard**,Reinforced (Reinforced required above 84H)

**Uprite and Brace Standard Finish:**PLT,Optional Catalog Colors

**Deck Connector Standard Finish:**PLT,Optional Catalog Colors

#### Suffix Key

PLT

- Platinum

## Multi-Function Uprite

---

- Post face slotted, allows shelf adjustment 2" on center
- Top Caps included on each Uprite
- Top Beam can be installed flush with top of Uprite
- Capacities based on use with Lozier Display Uprite
- Extra Top Caps can be ordered
- Standard Duty MF Post and Gondola Uprite combined - 4,000 lbs max
- Reinforced MF Post and Gondola Uprite combined - 5,000 lbs max
- Beam locking hardware doesn't work in top slot



## Product Options and Numbers

Example Part #: **MFU 84 PLT**

**Multi-Function Uprite :** **MFU**

**Height:** 72", 78", **84"**, 90", 96"

**Style:** Standard (**omit**), Reinforced RE

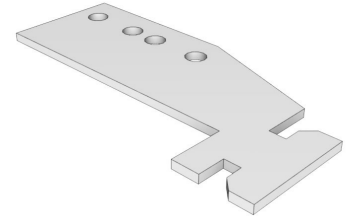
**Standard Finish:** **PLT**, Optional Catalog Colors

### Suffix Key

**PLT** - Platinum

## Multi-Function Uprite to Deck Connector

- Rotates into back of post and bolts to display Deck
- Hardware included
- Two styles available
- Two positions for clearance when using M35 or M55 Aluminum Deck molding



## Product Options and Numbers

Example Part #: **MF1151 PLT**

Without Door Kits: **MF1151**

With Door Kits: **MF4291**

Standard Finish: **PLT**, Optional Catalog Colors

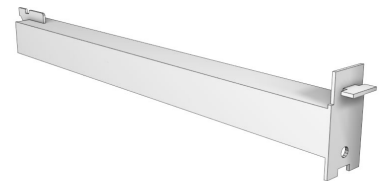
### Suffix Key

**PLT**

- Platinum

## Multi-Function Upright Brace

- Attaches to post in field without tools or hardware
- Optional bolt included with each Brace



## Product Options and Numbers

Example Part #: **MFUB 22 PLT**

Multi-Function Upright Brace: **MFUB**

Depth: 13", 16", 19", **22"**, 25", 28", 31"

Standard Finish: **PLT**, Optional Catalog Colors

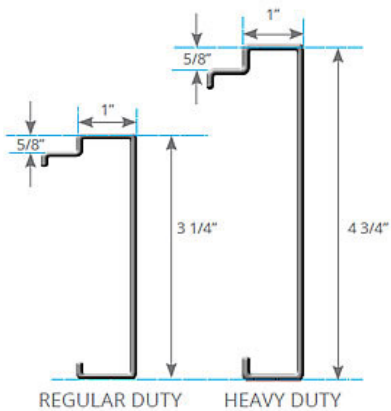
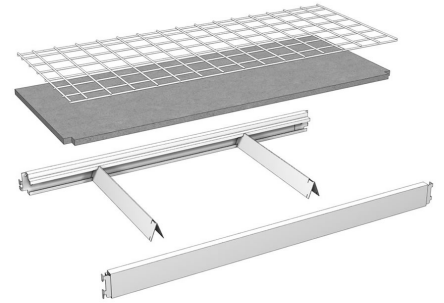
## Suffix Key

**PLT**

- Platinum

## Multi-Function Shelf Assemblies

- Available in two types: Regular Duty and Heavy Duty
- Two Shelf styles available: Particleboard or Wire Grid
- If Shelf Supports are not used, Beam Locking Clips (WS1291 or WS9111) are required
- Regular Duty: 1,600 - 3,000 lbs evenly distributed
- Heavy Duty: 3,000 lbs max evenly distributed



## INCLUDES

- 1 Multi-Function Front Beam
- 1 Multi-Function Back Beam
- 1 Multi-Function Shelf, Particleboard or Wire Grid
- Number of Shelf Supports required for customer application

## Product Options and Numbers

### Multi-Function Shelf Assembly

**Shelf Type:**Particleboard Shelf, Wiregrid Shelf

**Depth:**13", 16", 19", 22", 25", 28", 31"

**Width:**36", 48", 72", 84", 96"

**Number of Shelf Supports:**2, 3, 4

**Style:**Regular Duty, Heavy Duty

**Beam Standard Finish:**PLT, Optional Catalog Colors

**Shelf Support Standard Finish:**PLT, Optional Catalog Colors

**Shelf Standard Finish:**Particle Board= N/A or S04 Wire Grid = ZNC

### Suffix Key

<b>PLT</b>	- Platinum
<b>N/A</b>	- No Finish
<b>S04</b>	- Seal Coated
<b>ZNC</b>	- Zinc Wire Grid

### Multi-Function Shelf Capacity (Evenly Distributed Load in Lbs)

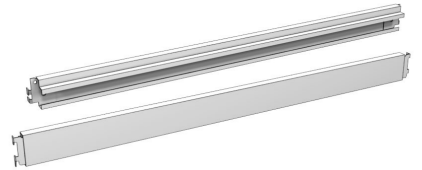
Shelf Depth	Section Width (Beam Length)	Number of Regular Duty Shelf Supports with Regular Duty Beams			Number of Heavy Duty Shelf Supports with Heavy Duty Beams	
		2	3	4	2	3
Up to 31" Deep		2	3	4	2	3
	36"	1,600	2,400	3,000	3,000	-

48	1,600	2,400	3,000	3,000	-
72"	1,600	2,000	2,400	-	3,000
84"	1,600	1,800	2,000	-	3,000
96"	1,600	1,600	1,600	-	3,000

## Multi-Function Front/Back Beams

---

- Heavy Duty Beams require Heavy Duty Shelf Supports



### Product Options and Numbers

Example Part #: **MF FB 96 PLT**

**Multi-Function Beam:** **MF**

**Beam Type:** **FB, BB**

**Section Width:** 36", 48", 72", 84", **96"**

**Style:** Regular Duty (**omit**) Heavy Duty (HD)

**Standard Finish:** **PLT**, Optional Catalog Colors

#### Suffix Key

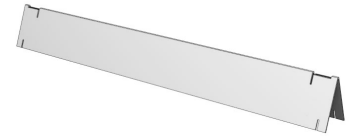
<b>FB</b>	- Front Beam
<b>BB</b>	- Back Beam
<b>PLT</b>	- Platinum

## Multi-Function Shelf Supports

---



- Heavy Duty Shelf Supports require Heavy Duty Beams



## Product Options and Numbers

Example Part #: **MFWSS 22 PLT**

**Multi-Function Shelf Support: MFWSS**

**Depth:** 13", 16", 19", **22"**, 25", 28", 31"

**Style:** Regular Duty (**omit**), Heavy Duty (HD)

**Standard Finish:** **PLT**, Optional Catalog Colors

### Suffix Key

**PLT**

- Platinum

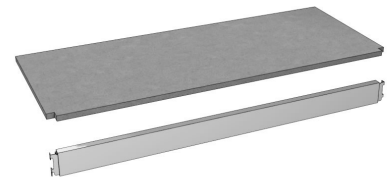
## Multi-Function Deck Assembly

---

- Regular Duty or Heavy Duty Beam available

### INCLUDES

- 1 Multi-Function Front Beam
- 1 Multi-Function Particleboard Deck



## Product Options and Numbers

**Multi-Function Deck Assembly**

**Depth:**13", 16", 19", 22", 25", 28", 31"

**Width:**36", 48", 72", 84", 96"

**Style:**Regular Duty, Heavy Duty

**Beam Standard Finish:**PLT,Optional Catalog Colors

**Deck Standard Finish:**N/A, S04

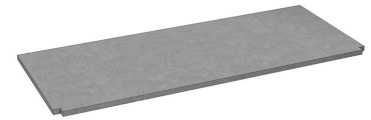
#### Suffix Key

<b>PLT</b>	- Platinum
<b>N/A</b>	- No Finish
<b>S04</b>	- Seal Coated

## Multi-Function Shelves and Decks

---

- One style fits both Regular Duty and Heavy Duty Beams
- Evenly distributed load up to 3,000 lbs (Dependent on Beam style and number of Shelf Supports)



### PARTICLEBOARD SHELF (S)/DECK (D)

- 5/8" industrial grade particleboard
- Pre-cut to fit Multi-Function sections
- Front corners notched to fit around MF Uprites

### WIRE GRID (WG)

- 3 x 3 heavy gauge wire mat
- One piece construction on all sizes
- Continuous perimeter wire
- Fireproof
- Light penetration
- Water from sprinklers can flow through
- Cleanliness
- Available in Zinc coated wire

## Product Options and Numbers

Example Part #: MF S 22 96 N/A

Multi-Function: MF

Shelf/Deck Style: S,D, WG

Base Deck Depth: 13", 16", 19", 22", 25", 28", 31"

Multi-Function Section Width: 36", 48", 72", 84", 96"

Standard Finish: N/A or S04 particleboard, ZNC wiregrid

### Suffix Key

N/A	- No Finish
S04	- Seal Coated
ZNC	- Zinc Wire Grid