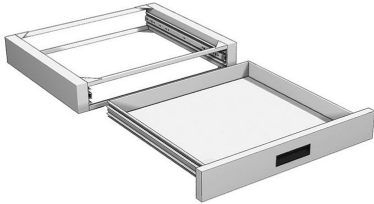


| You are in: [Lozier](#) > [Products](#) > [Rx Suspended Drawer](#)

Rx Suspended Drawer

Part Number: **RXSPDRP**



Rx Suspended Drawer contains a single Drawer mounted to the underside of the Countertop.

Product Details:

- Inside of drawer measures 20 1/4"D x 1 3/4"H
- Front of drawer measures 23 7/8"W x 3 1/2"H
- Single Drawer mounts to underside of Countertop
- Evenly distributed load of 100 lbs per Drawer

Product Options and Numbers

Part #: **RXSPDRP** **WHT**

Rx Suspended Drawer: **RXSPDRP**

Drawer Standard Finish: **WHT**

Suffix Key	
WHT	- White

