

| You are in: [Lozier](#) > [Products](#) > [Rx Undercounter Units](#)

Rx Undercounter Units

Part Number: **RX**



Undercounter Units are made of welded steel construction and include electrical access knockout. All Units have a 3"H recessed base painted CHR.

Product Details:

- 24"W x 24"D x 38"H
- Welded steel construction
- Drawers equipped with self-closing roller glides
- Recessed black plastic door and drawer pulls
- All have electrical access knockouts and 3"H recessed base
- Rx Countertops are fastened to cabinets from underside, order separately
- Finished Undercounter Unit is 39"H

How to Order

Rx Bottle Dispenser Unit

- Base Drawer is 7”H with 7 1/2” clearance
- Upper Shelves: 3 1/2”H
- Each drawer includes five dividers adjusting on 1” centers
- Evenly distributed load of 100 lbs per Drawer



Product Options and Numbers

Part #: **RXBDRP WHT CHR**

Rx Bottle Dispenser Unit: **RXBDRP**

Body Standard Finish: **WHT**

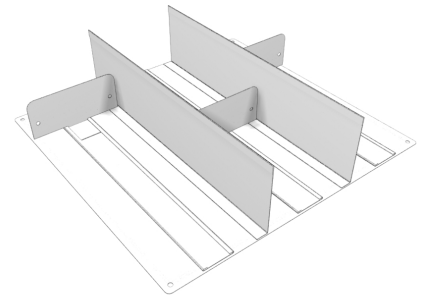
Base Standard Finish: **CHR**

Suffix Key

WHT	- White
CHR	- Charcoal Black

Rx Card Follower

- Use with Drawer Unit or Prescription File Unit
- Maintains three rows 6 1/2”W per Drawer



Product Options and Numbers

Part #: **RXCF WHT**

Rx Card Follower: **RXCF**

Standard Finish: **WHT**

Suffix Key

WHT	- White
------------	---------

Rx Closed Storage Unit

- One 7”H drawer with inside clearance of 5”
- Two steel Shelves, adjust on 2” centers
- Right-hand hinged door
- Evenly distributed load of 100 lbs per Drawer



Product Options and Numbers

Part #: **RXCSR**P **WHT** **CHR**

Rx Closed Storage Unit: **RXCSR**P

Body Standard Finish: **WHT**

Base Standard Finish: **CHR**

Suffix Key

WHT	- White
CHR	- Charcoal Black

Rx Computer Unit

- Right-hand hinged perforated door for ventilation
- One internal slide out Shelf



Product Options and Numbers

Part #: **RXCPRR**P **WHT** **CHR**

Rx Computer Unit: **RXCPRR**P

Body Standard Finish: **WHT**

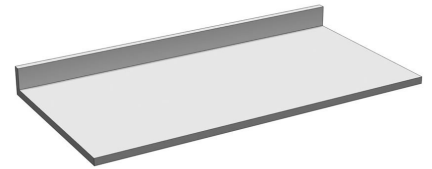
Base Standard Finish: **CHR**

Suffix Key

WHT	- White
CHR	- Charcoal Black

Rx Countertop

- Work surface: 23"D or 29"D, Overall Countertop: 24"D or 30"D
- Backsplash is 3"H, overall height is 4"
- Maximum one-piece length is 8'
- Laminated Countertop
- Countertops longer than 8' are made with largest even-foot sections connected with concealed Fasteners



Product Options and Numbers

Example Part #: **RXT 120 24 U LAW**

Rx Countertop: **RXT**

Length: 24", 48", 72", 96", **120"**, 144", 168", 192", 216", 240", 264", 288"

Depth: **24"**, 30"

Multiple Tops used to make Countertop: **U**, Omit if Countertop is under 120"L

Standard Finish: **LAW**, Optional Catalog Laminates

Suffix Key

LAW - White Leather Laminate

Rx Narcotics Unit

- 7"H locking external Drawer with 3 1/4" clearance
- Two 1 1/2"H sliding internal trays with 8" clearance
- Four dividers on internal trays, 1" adjustability
- 10 1/2"H space at bottom of unit
- Right-hand hinged door with lock
- Evenly distributed load of 100 lbs per Drawer



Product Options and Numbers

Part #: **RXNRCRP WHT CHR**

Rx Narcotics Unit: **RXNRCRP**

Body Standard Finish: **WHT**

Base Standard Finish: **CHR**

Suffix Key

WHT	- White
CHR	- Charcoal Black

Rx Open Storage Unit

- Two steel Shelves, adjust on 2" centers

Product Options and Numbers

Part #: **RXOPS WHT CHR**



Rx Open Storage Unit: **RXOPS**

Body Standard Finish: **WHT**

Base Standard Finish: **CHR**

Suffix Key

WHT	- White
CHR	- Charcoal Black

Rx Printer Unit

- Sliding shelf supports large printer
- One 9 11/16”H Drawer with 6” inside clearance
- Printer opening: 20 7/16”W x 21”D x 21”H



Product Options and Numbers

Part #: **RXPRNT1DWRRP WHT CHR**

Rx Printer Unit: **RXPRNT1DWRRP**

Body Standard Finish: **WHT**

Base Standard Finish: **CHR**

Suffix Key

WHT	- White
CHR	- Charcoal Black

Rx Refuse Unit

- 5 3/4” opening above door
- Two widths: 24”W & 12”W
- Right-hand hinged door
- Trash receptacle not included



Product Options and Numbers

Example Part #: **RXTR 12 RP WHT CHR**

Rx Refuse Unit: **RXTR**

Width: **12"**, omit if 24"

Recessed Pull: **RP**

Body Standard Finish: **WHT**

Base Standard Finish: **CHR**

Suffix Key

WHT - White
CHR - Charcoal Black

Rx Sink Unit

- 7"D stainless steel sink, 14" D x 16" W Bowl
- Chrome plated faucet
- Right-hand hinged door
- Countertop separate



Product Options and Numbers

Part #: **RXSNKRP WHT CHR**

Rx Sink Unit: **RXSNKRP**

Body Standard Finish: **WHT**

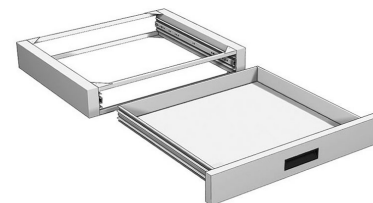
Base Standard Finish: **CHR**

Suffix Key

WHT - White
CHR - Charcoal Black

Rx Suspended Drawer

- Inside of drawer measures 20 1/4"D x 1 3/4"H
- Front of drawer measures 23 7/8"W x 3 1/2"H
- Single Drawer mounts to underside of Countertop
- Evenly distributed load of 100 lbs per Drawer



Product Options and Numbers

Part #: **RXSPDRP WHT**

Rx Suspended Drawer: **RXSPDRP**

Drawer Standard Finish: **WHT**

Suffix Key	
WHT	- White

Rx Vial Drawer Unit

- Two large capacity flat-bottom drawers, taper from 9 1/2”H at rear to 5”H at
- Fronts measure 7”H, opening above is 10”
- Each drawer includes four dividers adjustable 1” on center
- Evenly distributed load of 100 lbs per Drawer



Product Options and Numbers

Part #: **RXVLDRP WHT CHR**

Rx Vial Drawer Unit: **RXVLDRP**

Body Standard Finish: **WHT**

Base Standard Finish: **CHR**

Suffix Key	
WHT	- White
CHR	- Charcoal Black