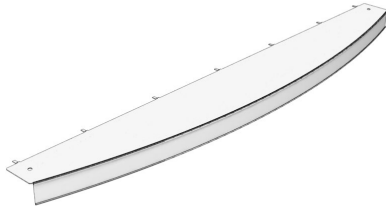


| You are in: [Lozier](#) > [Products](#) > [Spot Lite Shelf Extender](#)

Spot Lite Shelf Extender

Part Number: **SPOT**



Use the Spot Lite Shelf Extender to easily and quickly promote merchandise without changing shelves. The Shelf Extender attaches to the perforations at the front of any standard Shelf or Deck.

Product Details:

- Attaches to all standard perforated Shelves and Decks
- Radius front accepts 1.235" tags
- Recommended for Light Duty applications
- See Radius Front Display Shelves and Decks for heavier load capacity applications
- Evenly distributed load of 25 lbs

Product Options and Numbers

Example Part #: **SPOT 4 03 PLT**

Spot Lite Shelf Extender: **SPOT**

Shelf Width: 2', 30", 3', 4'

Projection: **03"**

Standard Finish: **PLT**, Optional Catalog Colors

Suffix Key

PLT - Platinum