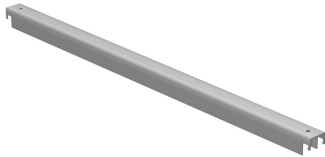


| You are in: [Lozier](#) > [Products](#) > [Tear Drop Beam Shelf Support - Heavy Duty](#)

Tear Drop Beam Shelf Support - Heavy Duty

Part Number: **TBSSH**



Product Details:

- Use for heavy duty applications
- Nominal lengths correspond to nominal depths of conventional Pallet Rack Uprights
- Not Available in GLV

Shelf Supports (in conjunction with particleboard/wire shelves) are required when levels are hand loaded or when palletized loads do not rest on front and back beams (or when pallets do not have sufficient strength to support the load in this fashion).

Product Options and Numbers

Example Part #: **TBSSH 36 QQ2**

Tear Drop Beam Shelf Support: **TBSSH**

Length: **36"**, 42", 48"

Standard Finish: **QQ2**

Suffix Key

QQ2

- Gray

Available Capacity on Flat Wire Decking or Particleboard
Using the Number of Pallet Rack Supports Included

NOTE: The rated load capacity per pair of beams must be equal to or exceed the rated shelf capacity

Frame Depth	Beam Length	# Of TBSS Supports			# Of TBSSH Supports		
		3	4	6	3	4	6
36"	48"	2625	X	X	3000	X	X
	72"	2625	3500	X	3000	4000	X
	93"	X	3500	5250	X	4000	6000
	96"	X	3500	5250	X	4000	6000
	99"	X	3500	5250	X	4000	6000
	102"	X	3500	5250	X	4000	6000
	108"	X	3500	5250	X	4000	6000
42"	48"	2175	X	X	3000	X	X
	72"	2175	2900	X	3000	4000	X
	93"	X	2900	4350	X	4000	6000
	96"	X	2900	4350	X	4000	6000
	99"	X	2900	4350	X	4000	6000
	102"	X	2900	4350	X	4000	6000
	108"	X	2900	4350	X	4000	6000
48"	48"	1875	X	X	3000	X	X
	72"	1875	2500	X	3000	4000	X
	93"	X	2500	3750	X	4000	6000
	96"	X	2500	3750	X	4000	6000

	99"	X	2500	3750	X	4000	6000
	102"	X	2500	3750	X	4000	6000
	108"	X	2500	3750	X	4000	6000

Beam capacities based on even weight distribution