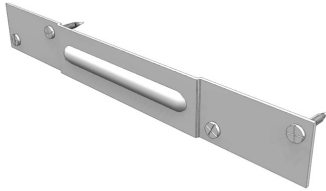


| You are in: [Lozier](#) > [Products](#) > [S-Series Storage Back-to-Back Connector](#)

# S-Series Storage Back-to-Back Connector

Part Number: **SS**



S Series Back-to-Back Connector closes Uprite Assemblies in Storage Shelving runs to create a double-entry island.

## Product Details:

- Connect closed S-Series Storage Uprite Assemblies to create a double-entry Island
- Screws included

Assembly Height	# of Connectors Required
36" - 72"	2
84" - 108"	3
120" - 144"	4

## Product Options and Numbers

---

Part #: **SS1311** **GLV**

**S-Series Back-to-Back Connector: SS1311**

**Standard Finish: GLV**

Suffix Key

**GLV** - Galvanized