

| You are in: [Lozier](#) > [Products](#) > [Tire Rack](#)

Tire Rack

Part Number: **WS**



Assemble a variety of Widespan components together to create a functional Tire Rack.

Product Details:

- 96 1/2"W inside Upright posts if using WSB96
- Beam Locking Clips required
- One Shelf Support required to tie beams together
- Use standard Widespan components to build Tire Rack

COMPONENTS

- 2 Uprights (WSU_)
- 6 Beams (WSB_)
- 3 Shelf Supports (WSSS_)
- Floor Anchors (WS1291.STS)
- Beam Locking Clips (WS1291.STS)

WARNING: Shelving must be anchored to a suitable building wall, to the floor, or otherwise braced to prevent overturning when merchandising tall or heavy items which lean against the shelving. The weight and force of leaning items on unanchored or unbraced shelving may cause the shelving to overturn or collapse.

How to Order

Widespan One-Piece Upright Frame

- One-piece Upright Frames for units 48" - 120"
- Upright post slotted on face, allows shelf adjustment 2" on center
- Square holes punched on sides of Upright post for accessories
- Accessory holes punched 6" on center on face of Upright also aid beam placement
- Top Caps included on each Upright
- One Frame required for each section, plus one at end of each run
- To provide increased protection under harsh shipping conditions add "SPC" to part number for additional packaging
- Floor Anchors, Floor Protectors, or Back to Back Connectors may be ordered separately
- Evenly distributed load of 10,000 lbs per Upright Frame at 48" max. Beam spacing, vertically



REINFORCED UPRIGHT FRAME

- "RE" Frame available in 72" - 120"H and all depths (lower Frame only on 132" - 192")
- For use with hand loader/stacker
- Reduces chance of Frame damage
- Channel welded inside each post in lower 48"
- Welded foot plate for anchoring, 1/2" hole



Product Options and Numbers

Example Part #: **WSU 18 048 RE SPC PLT**

Widespan Upright : WSU

Depth: 18", 24", 30", 36", 42", 48"

Height: 048", 060", 072", 084", 096", 120"

Reinforced Upright for Hand Loader/ Stacker Applications: RE, Leave blank if not applicable

Additional Packaging: SPC, Leave blank if not applicable

Standard Finish: PLT, Optional Catalog Colors

Suffix Key

PLT -Platinum

Widespan Two-Piece Upright Frame

- Two-piece Upright Frames for units over 120" (Upright Connectors included)
- Upright post slotted on face, allows shelf adjustment 2" on center
- Square holes punched on sides of Upright post for accessories
- Accessory holes punched 6" on center on face of Upright also aid beam placement
- Top Caps included on each Upright
- One Frame required for each section, plus one at end of each run
- To provide increased protection under harsh shipping conditions add "SPC" to part number for additional packaging
- Floor Anchors, Floor Protectors, or Back to Back Connectors may be ordered separately
- Evenly distributed load of 10,000 lbs per Upright Frame at 48" max. Beam spacing, vertically



REINFORCED UPRIGHT FRAME

- "RE" Frame available in 72" - 120"H and all depths (lower Frame only on 132" - 192")
- For use with hand loader/stacker
- Reduces chance of Frame damage
- Channel welded inside each post in lower 48"
- Welded foot plate for anchoring, 1/2" hole



Product Options and Numbers

Example Part #: **WSU 18 144 RE SPC U PLT**

Widespan Uprite : **WSU**

Depth: **18"**, 24", 30", 36", 42", 48"

Height: 132", **144"**, 156", 168", 192"

Reinforced Uprite for Hand Loader/ Stacker Applications: **RE**, Leave blank if not applicable

Additional Packaging: **SPC**, Leave blank if not applicable

Unit: **U**

Standard Finish: **PLT**, Optional Catalog Colors

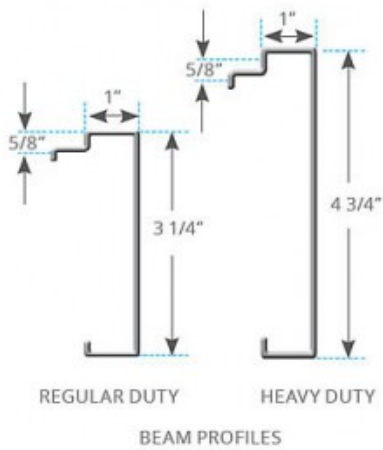
Suffix Key

PLT

-Platinum

Widespan Beam

- Available in both Heavy Duty and Regular Duty
- Integral Beam connectors
- Tilt-in design, no fasteners or locking clips required when used with Shelf Support (WSSS)
- Minimum of four beams required per section: one each top, bottom, front and back of section
- Requires Shelf Supports to tie Beams together
- Minimum one Shelf Support on 48"W and 60"W Beams
- Minimum two on 72"W, 84"W and 96"W, or must use Locking Clips



Product Options and Numbers

Example Part #: **WSB 48 - PLT**

Widespan Beam: **WSB**

Section Width: **48"**, 60", 72", 84", 96"

Optional Heavy Duty Beam: HD, **Leave blank** if not applicable

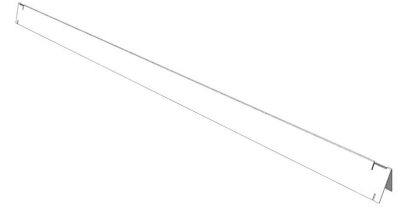
Standard Finish: **PLT**, Optional Catalog Colors

Suffix Key

HD	-Heavy Duty Beam
PLT	-Platinum

Widespan Shelf Support

- Available in both Heavy Duty and Regular Duty
- Rotates into place inside Beam body
- Number of Supports required varies based on required load



Product Options and Numbers

Example Part #: **WSSS 18 - PLT**

Widespan Shelf Support : WSSS

Upright Frame Depth: 18", 24", 30", 36", 42", 48"

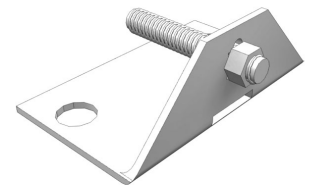
Optional Heavy Duty Beam: HD, Leave blank if not applicable

Standard Finish: PLT, Optional Catalog Colors

Suffix Key	
HD	-Heavy Duty Beam
PLT	-Platinum

Widespan Floor Anchor

- Heavy gauge steel angle fastens Upright Frame to floor
- Required when height-to-depth ratio exceeds 6 to 1
- Use as required to meet seismic anchoring specifications
- Upright mounting hardware included
- Anchor bolt not included



Product Options and Numbers

Example Part #: **WS1241 GLV**

Widespan Floor Anchor: WS1241

Standard Finish: GLV

Suffix Key	
GLV	- Galvanized

Widespan Beam Locking Clip

- Use for all beam locations other than in the top slot of the Uprite
- Snap into Uprite slots to prevent Beam movement
- Use at each end of Beam or where two adjacent Beams share same slot
- Must use when not using Shelf Supports (WSSS)



Product Options and Numbers

Example Part #: **WS1291 STS**

Widespan Beam Locking Clip: **WS1291**

Standard Finish: **STS**

Suffix Key	
STS	- Stainless Steel