

## MODULAR TUBULAR MERCHANDISER

# Mobile and modular to suit your changing needs



### FEATURES & BENEFITS

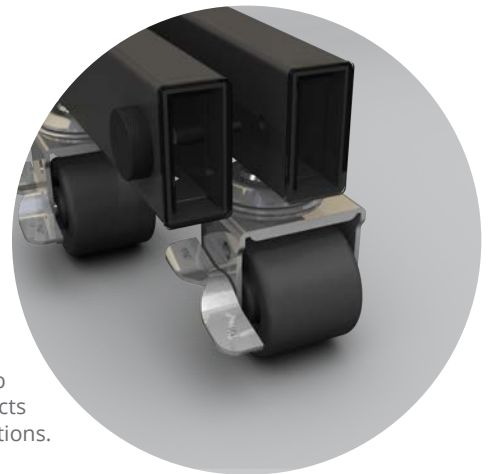
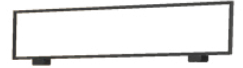
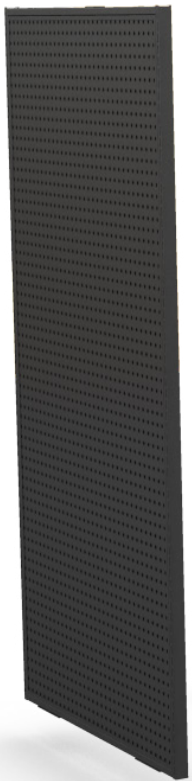
The Mobile Tubular Merchandiser is available in numerous height, width, and depth sections with S-Style, square nose, or no deck. Available back combinations include PEG, Marteck, or Multigrad (both sides).

- Tubular 1x2 construction
- Independent tube T-sections connect via integral knobscrews to allow single or multi-section run merchandising
- Offset narrow slotting minimizes gaps between shelves on adjacent connected sections
- Available in multiple heights and depths, multiple back styles (Peg, Marteck, Multigrad), and numerous deck options (No Deck, S-Style, Square Front)
- Accepts most Lozier shelves and accessories
- Optional 3/4" x 1 1/4" Tube End Frames (Peg, Marteck, Multigrad) or Wire Wing Panels for end of run merchandising
- Optional Vertical or Horizontal Sign Holders provide opportunity for graphic presentation

# MODULAR TUBULAR MERCHANDISER



Offset slot pattern minimizes gaps between adjacent shelves. Narrow slotting makes them less visible.



Integral knob screw connects adjacent sections.


# MODULAR TUBULAR MERCHANDISER

## MODULAR TUBULAR MERCHANDISER

- Tubular 1x2 construction
- Independent tube T-sections connect via integral knobscrews to allow single or multi-section run merchandising.
- Offset narrow slotting minimizes gaps between shelves on adjacent connected sections.
- Available in multiple heights and depths, multiple back styles (Peg, Marteck, Multigrid), and numerous deck options (No Deck, S-Style, Square Front)
- Accepts most Lozier shelves and accessories.
- Optional 3/4" x 1 1/4" tube end frames (Peg, Marteck, Multigrid) or wire wing panels for end of run merchandising
- Optional vertical or horizontal sign holders provide opportunity for graphic presentation
- Not compatible with TL style shelves 22D


Example Part # :	MTM	C	D	SN	4	48	16	P	PLT	PLT	PLT
	1.	2.	3.	4.	5.	6.	7.	8.	9.	10.	11.

1. **Tubular Modular Merchandiser: MTM**
2. **Caster: C**
3. **Double Retainer: D**
4. **Deck Style: SN, N, SF**
5. **Width: 2', 3', 4'**
6. **Height: 48", 54", 60", 66", 72"**
7. **Section Depth (each side): 13", 16", 19", 22"** (72"H 13"D not available)
8. **Back Type: P, M, MG** (both sides)
9. **Back Color: PLT**, Optional Catalog Colors
10. **Frame Color: PLT**, Optional Catalog Colors
11. **Deck Color: PLT**, Optional Catalog Colors (Omit for Deck Style: N)

 For multiple section runs order combination of above that include desired section widths and total to desired run length.

Equal depth adjacent sections are required to connect to one another.



 800 lbs evenly distributed load rating per section (400 lbs each side of each section)

### ORDERING KEY

P = Peg

N = No Deck

SN = S-Style (no molding)

M = Marteck

SF = Square Front

Width = Section Width

MG = Multi-Grid

# MODULAR TUBULAR MERCHANDISER

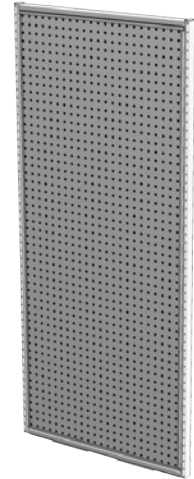
## MODULAR TUBULAR END FRAME

- 3/4 X 1 1/4 Tube Construction
- Available in heights to match section (must match section height)
- Available widths: 2', 30", 3', 4' widths
- Multiple Back Panel types available (PM, MM, MG)
- Offset Narrow Slots

**Load Rating 400#** Note: End Frame Load contributes to T system Section Load

Example Part # :	MTE	60	2	P	M	PLT	PLT	PLT
	1.	2.	3.	4.	5.	6.	7.	8.

- Tubular End Frame: MTE**
- Frame Height: 48", 54", 60", 66", 72"**
- Frame Width: 2', 30", 3', 4'**
- Exterior Back Style: P, M, MG** (Note: MG style exterior is single grid flush front. No interior back with MG.)
- Interior Back Style: M**
- Exterior Back Color: PLT**, Optional Catalog Colors
- Interior Back Color: PLT**, Optional Catalog Colors
- Frame Color: PLT**, Optional Catalog Colors



## MODULAR TUBULAR TWO-WAY VERTICAL SIGN HOLDER

- Mounts down top of Tubular Upright/Frame and saddles over T-Legs
- Not compatible with Tube Two-Way w/Frame Insert Base or Tube Two-Way Top Cap (See Mobile Tubular Two-Way Top Cap)
- Top load Sign
- Recommended sign thickness: 3/16" - 1/4"
- Width: Same as Nominal, Height: Nominal minus 1 3/4"

Example Part # :	T2W	V	SH	48	12	PLT
	1.	2.	3.	4.	5.	6.

- Tube Two-Way Merchandiser: T2W**
- Vertical: V**
- Sign Holder: SH**
- Merchandiser Height: 48", 54", 60", 66", 72"**
- Sign Holder Width: 12", 18"**
- Standard Finish: PLT**, Optional Catalog Colors



### ORDERING KEY

P = Peg

MG = Multi-Grid

MM = Marteck/Marteck

M = Marteck

PM = Peg/Marteck

# MODULAR TUBULAR MERCHANDISER

## MODULAR TUBULAR TWO-WAY HORIZONTAL SIGN HOLDER

- Mounts on top tube via integral clamps
- Side load Sign
- Accepts up to 3/32" thick signage
- Also compatible with Mobile Tubular Two-Way Merchandizer
- Sign size same as Nominal Sign Holder

Example Part # :	T2W	H	SH	2	6	PLT
	1.	2.	3.	4.	5.	6.

1. **Tube Two-Way Merchandiser: T2W**
2. **Horizontal: H**
3. **Sign Holder: SH**
4. **Width: 2', 3', 4'**
5. **Height: 4", 6"**
6. **Standard Finish: PLT**, Optional Catalog Colors

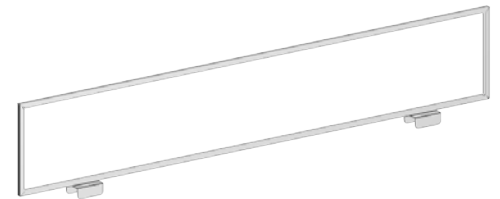


## TUBULAR END FRAME HORIZONTAL SIGN HOLDER

- Mounts on top of Modular Tubular End Frame via integral clamps
- Side load
- Accepts up to 3/32" thick signage
- Sign size same as nominal sign holder

Example Part # :	TUEFSH	3	6	PLT
	1.	2.	3.	4.

1. **Tube End Frame Sign Holder: TUEFSH**
2. **Width: 2', 30", 3', 4'**
3. **Height: 4", 6"**
4. **Standard Finish: PLT**, Optional Catalog Colors



## MODULAR TUBULAR TWO-WAY WIRE WING PANEL

- Carton Rounding: 2
- Mounts centered full-height on Two-Way Merchandiser Frame or Modular Tubular Merchandiser
- No loose hardware
- Fully wrapped Wire Wings
- Accepts Wire Wing Panel/Crossbar Hooks

Example Part # :	TUWWP	48	2	PLT
	1.	2.	3.	4.

1. **Tube Two-Way Merchandiser: TUWWP**
2. **Merchandiser Height: 48", 54", 60"**
3. **Wing Panel Width: 2', 3'**
4. **Standard Finish: PLT**, Optional Catalog Colors

