

LOZIER[®]

BLENDED

CAPABILITIES

MIXED

MATERIALS

flexible

DESIGN

GLOBALSHOP 2016



SPECIALTY
FIXTURES
by **LOZIER**





Booth includes conceptual designs, some items require minimum ordering quantities.

"That's Lozier?"

What a great show! If you attended GlobalShop 2016, I hope you stopped by the Lozier booth and learned more about our expanded capabilities. We heard from retailers in a wide range of market segments who were both surprised and excited about all our company can offer customers today. So are we!

If you weren't able to make it this year, don't worry—we're bringing the booth to you in the following pages. You'll see how we're incorporating mixed materials and blending the capabilities of Lozier and Specialty Fixtures by Lozier to create a wide range of customer options. Plus, we highlight our expanded import resources with fixtures that combine domestic and import components and a variety of import accessories.

Of course, we haven't stopped developing new ways to use our classic gondola shelving. You'll love the variety of shelf materials, accessories, and merchandising solutions featured. Today's gondola goes far beyond the traditional while still demonstrating the quality, flexibility and durability Lozier is known for.

Take a look at our capabilities and let's talk about your merchandising challenges.



Greg Maring

VP Sales and Marketing

Giving gondola a fresh look.

Home Goods Display is a
standard gondola Wall Section
with customized accessories.



Booth includes conceptual designs, some items require minimum ordering quantities.

COMBINED CAPABILITIES

Lozier shelving systems have long set the industry standard for quality, flexibility and value. Now we can give you even more options by adding Specialty Fixtures elements and new, upscale materials.



2-Way Fixture has a gondola base, plus a custom wood shroud, high-end laminate, and square nose shelves and decks. Get a custom look without a custom price.



Our combined capabilities shine in this distinctive **Quick Service Counter** display. In addition to the self-service bakery case provided thorough Spartan Showcase by Lozier, we built a steel, powder coated cabinet and added a Corian top. Wire Truss Steel Shelves complete the look.

MIXED MATERIALS

We have the resources and the design and engineering skills to create the right fit for your brand and your budget.



Feature Table and Benches, Étagère, and Open Frame Wardrobe set the mood in our Better Softlines Shop.

Booth includes conceptual designs, some items require minimum ordering quantities.



Metal, wood, wire,
solid surfaces,
veneers, fabric,
laminates, glass,
stainless steel...
Countless ways to
add interest to
your displays.



ON THE MOVE

As your sales and merchandising needs shift, Lozier's flexible, mobile options adjust right along with you.



Modular Display

Modular base system is optimal for changing product needs and configurations.



2-Way Display

Perfect for merchandising main aisle and impulse checkout options.

Booth includes conceptual designs, some items require minimum ordering quantities.



Seasonal Merchandiser/Folding Cart

Allows you to easily set up and move temporary displays, then stows away until needed again. Folds up to 9" thick.



Mobile Checkout

Locking casters and durable steel construction allow you to move this portable Point of Sale station as needed for seasonal sales or special events.

IMPORT OPTIONS

In addition to import hardware and accessories, we showed several examples of blending domestic wood and import metal. Import provides a complement to our robust domestic resources.



Cube Display

Blending import and domestic components is a creative way to add interest to your displays while staying on budget.



Import Wall

Varied examples of import hardware and accessories.



Tiered Table

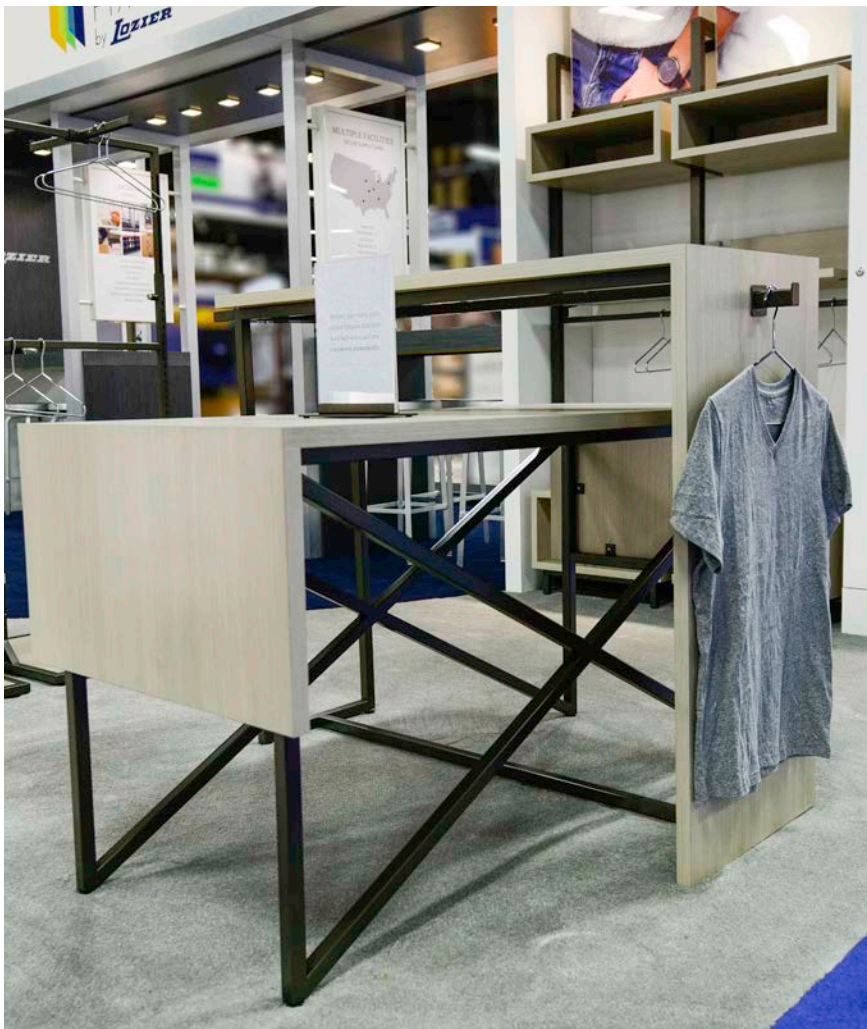
Combining metal with wood, custom laminate and casters.

Booth includes conceptual designs, some items require minimum ordering quantities.



Outrigger Wall Display

This concept was developed to show a head-to-toe merchandising option.



Nesting Table Set

Just one of the fixtures shown that can be shipped knocked-down.

Enjoy the convenience of working with a single source.

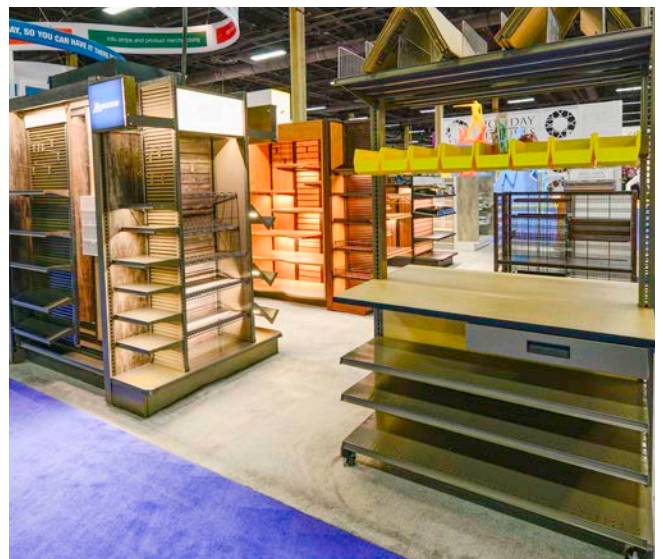


Flex Racks

Demonstrating flexibility of design by using the same fixture base with shelves and as an apparel rack. Our import team can help with standard and custom-designed racks in a variety of finishes.

TODAY'S GONDOLA

When people visit our showroom, they're often surprised by the many creative and upscale solutions we've developed using Lozier shelving systems. We brought a bit of that to GlobalShop, creating four gondola displays that showcase a huge number of options for your store.



Booth includes conceptual designs, some items require minimum ordering quantities.



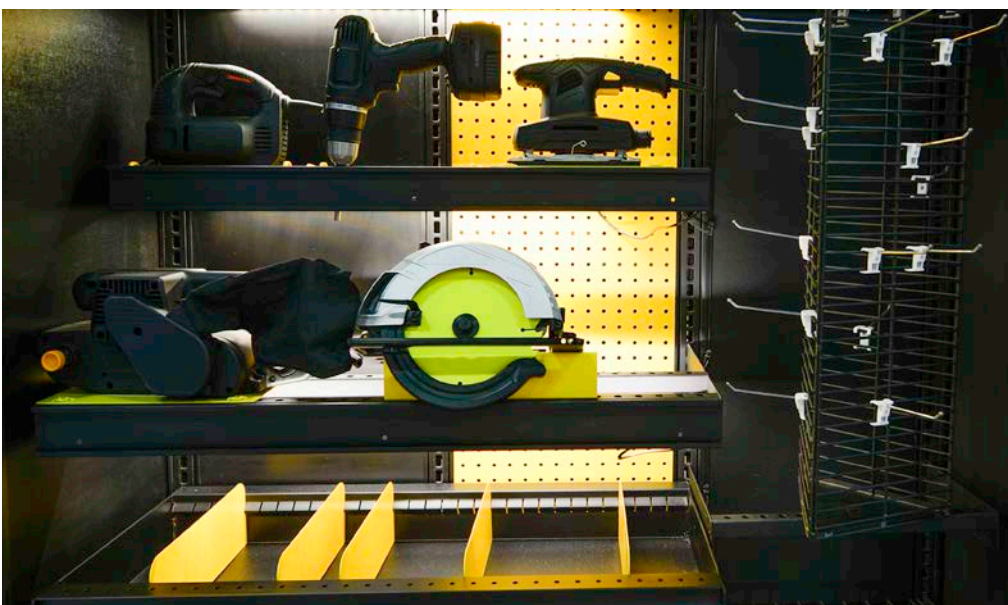
Radius Shelves | Wire Wing Panels



Wire Shelves | Wire Grid Options

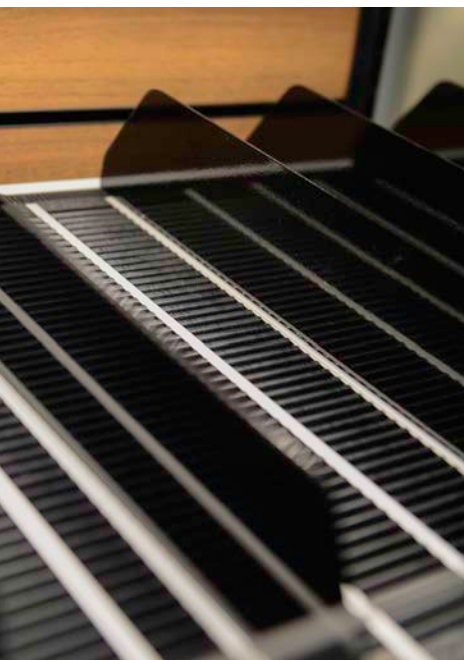


Wood Shelf Molding



Power Tool Display | Bin Deck | Triangular Wire Spinner

Flex Roller Shelf

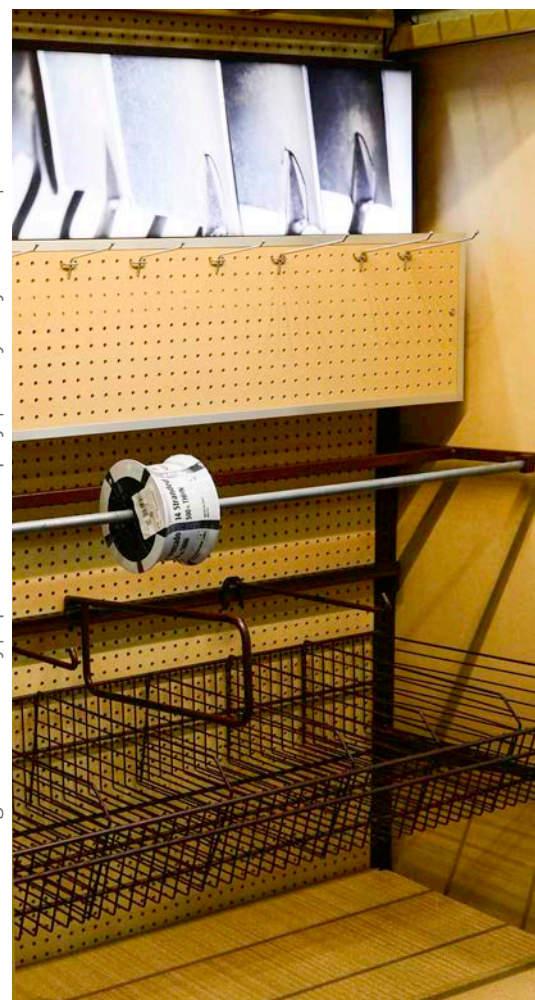


Downslant Shelf | Micro Slotwall | Shelf Frame



We are going beyond traditional to help you create an unforgettable experience.

Extended Pegboard Assembly | Spool Goods Display | Heavy Duty Dividers | Wire Baskets



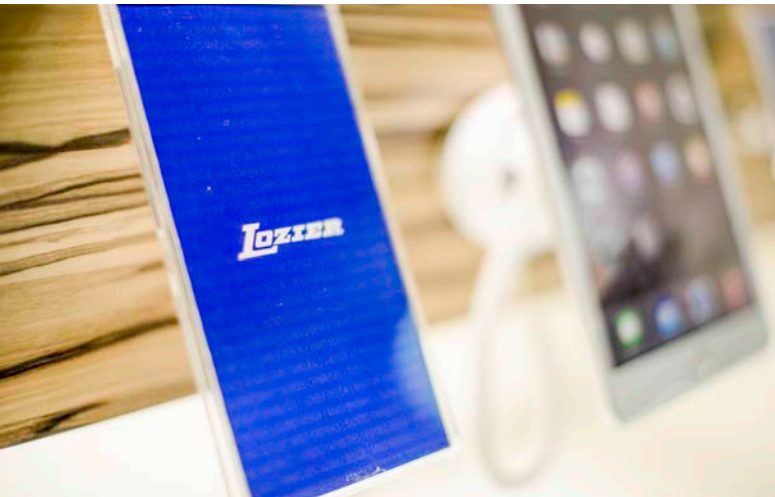
POWER & LIGHT

An easy, energy-efficient way to brighten your retail environment and sales outlook. Create a display customers can't ignore with Quick Connect LED lights.



Quick Connect Lights

Clean, natural light in a plug-and-play system.



Powered Shelves

Invite customer interaction with your merchandise.



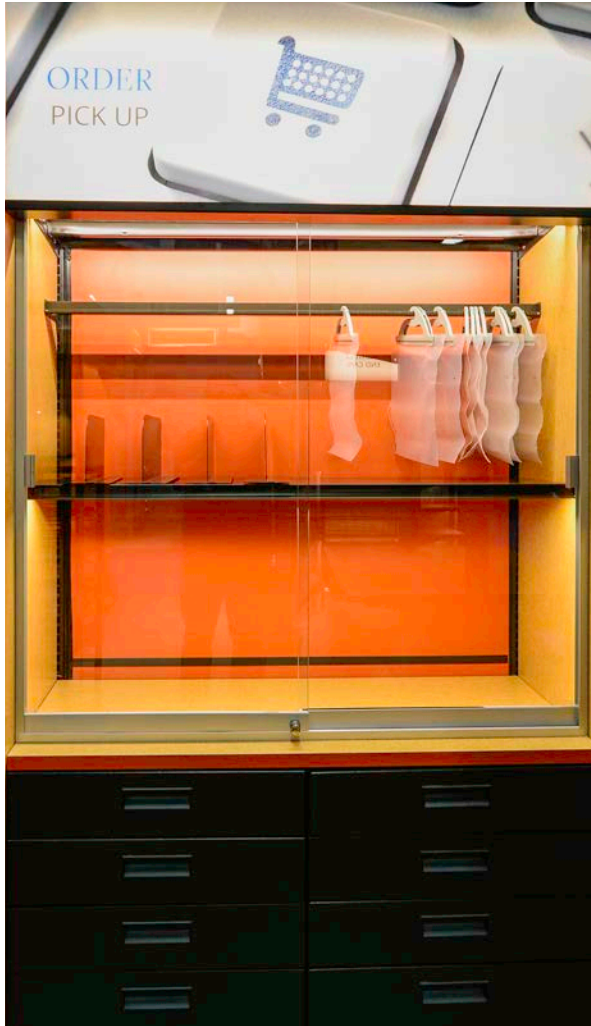
Electronics Display

Showcase your tech products with a fixture that draws customers' attention.

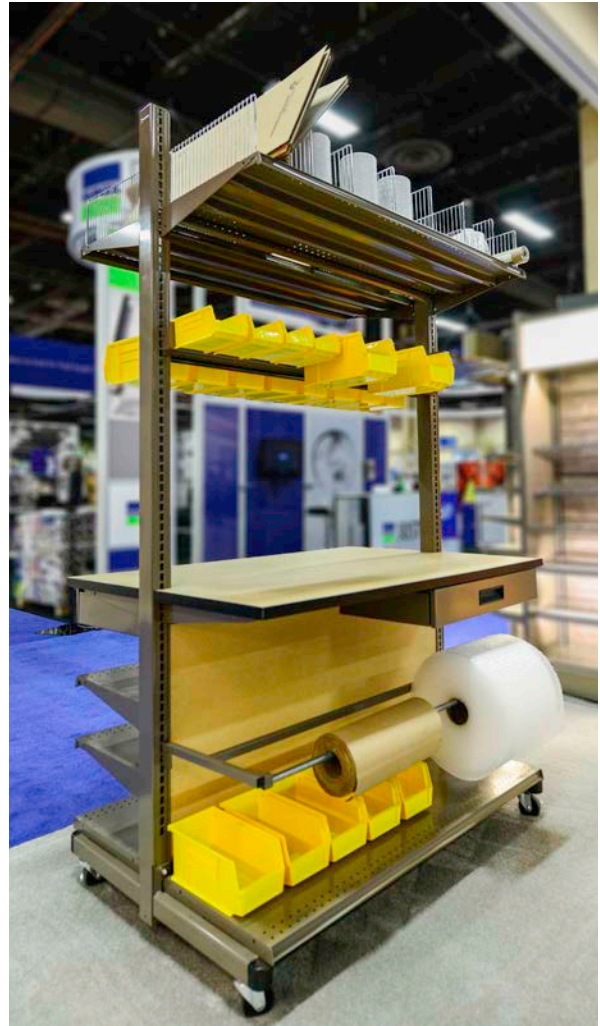
Booth includes conceptual designs, some items require minimum ordering quantities.

BUY ONLINE, PICK UP IN STORE

Ship-to-Store and Ship-from-Store continue to grow in popularity as retailers with a brick-and-mortar presence seek ways to reach online consumers. This concept was very popular when we presented it at GlobalShop last year and we're pleased to show it again.



Customize this **Wall Display** to fit your merchandise with configurable shelves, drawers and security door options.



The **Pack and Ship Station** is optimized for efficiency and flexibility. It can be customized for your back room operations using standard components.

CHECKOUTS

We've built thousands of checkouts for customers in all types of stores, ranging from simple components to custom wood. At this year's show, we highlighted four options: gondola-based, standard wood, specialty wood, and mobile.



Gift Card Slots



The **Mobile Checkout** was a show hit. Flexible merchandising capabilities, small footprint and ease of use impressed customers.

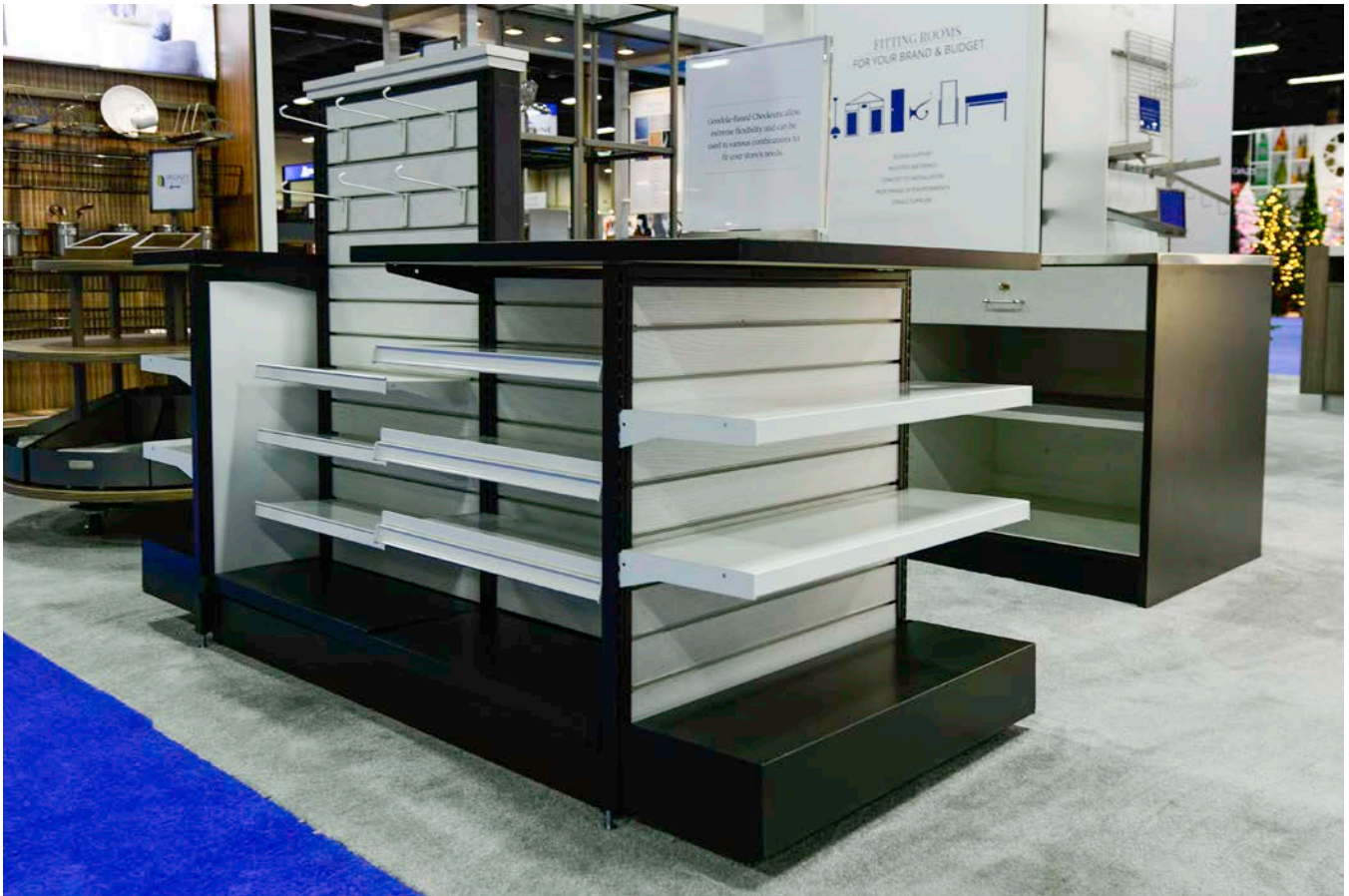


Bagwell



Micro Slotwall Back | Wire Truss Shelves

Booth includes conceptual designs, some items require minimum ordering quantities.



Gondola-Based Checkout and High Volume Wood Counter

Whatever your merchandise or your brand, Lozier can develop a checkout that fits.



Custom Wood Checkout with a Corian top and illuminated sides for more sophisticated environments.

SHOWCASES

Through Spartan Showcase by Lozier, we offer a broad assortment of showcases—from standard to completely custom and everything in between.



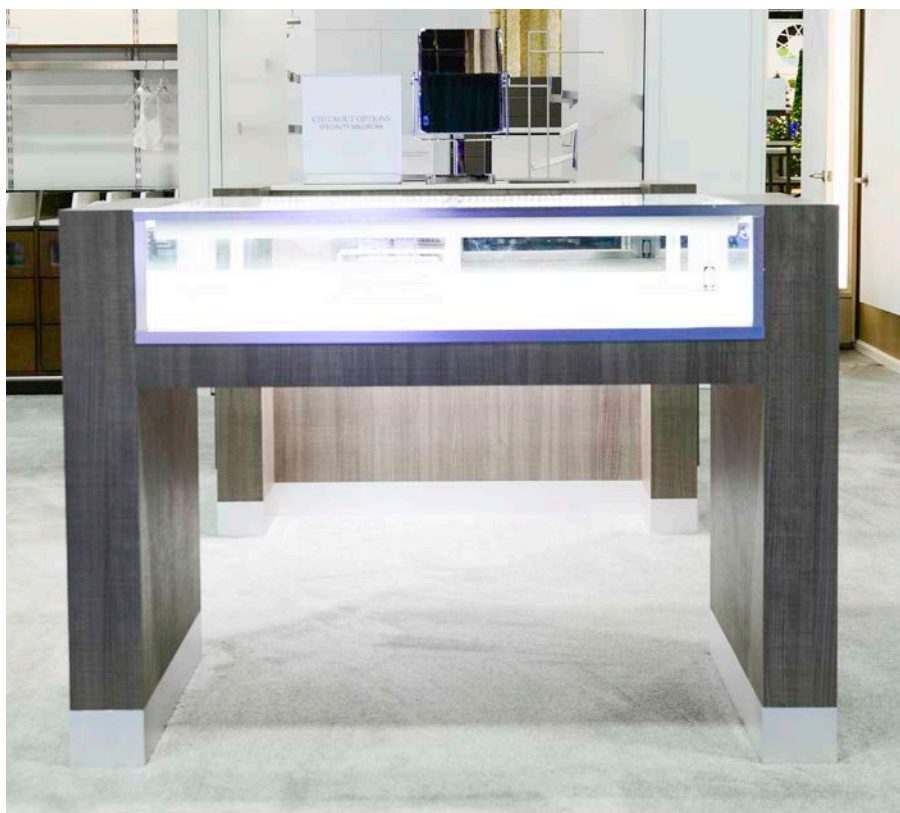
Tower Showcase

This option includes vertical lighting, frameless glass door, and adjustable glass shelves.



Bakery Case

Self-service countertop model is one of many standard options available.



Specialty Showcase

Design includes laminate, brushed stainless, white showcase pad, and illumination.

Booth includes conceptual designs, some items require minimum ordering quantities.

FITTING ROOMS

Lozier offers a wide range of fitting room options from gondola-based to custom wood as shown. Plus, we can handle the entire project—structure, seating, mirrors, hangrails, hooks and sign holders.





VISIT US AND SEE FOR YOURSELF

Our 6,500 square-foot showroom at our corporate headquarters in Omaha is an industry-leading showcase of Lozier products and designs.

We'd love to show you around and talk more about solutions for your store.

Thank you and see you soon!

