

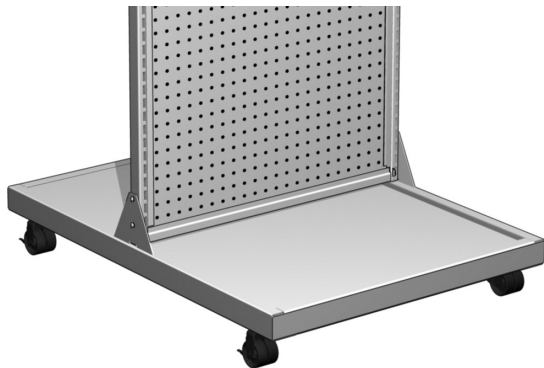
2-WAY MERCHANDISER

2-Way Merchandiser

- Slotted steel frame accepts most standard Lozier Shelves & Accessories
- Available with Levelers or 2" locking Casters
- Available with Pegboard or Marteck® back panels
- Three styles:
 - S-Style Base Deck
 - Fully Framed Base
 - No Base
- Order Shelves separately
- Uniformly distributed load 300 lb. - 150 lb per side



S-Style Base Deck



Fully Framed Base



No Base

EXAMPLE PART NO.

2W	S	54	24	10	L	P	N
----	---	----	----	----	---	---	---

2W = 2-Way Merchandiser

S = Deck Style:

"S" S-Style Base Deck

"F" Framed Base

"N" No Base

54 = Overall Height: 48" or 54"

24 = Panel Width: 24", 30", 36", 48"

10 = Depth (both sides): 10", 13", or 16"

L = Base Type:

"L" Leveler or "C" Caster

P = Back Panel Style (both sides)

"P" Pegboard or "M" Marteck®

N = No Molding

• Molding (S-Style Base Deck only)

M13_, M35_, MR1_ (laminated only)

Specify "S" Satin or "G" Gold

STANDARD FINISH:

PLT	PLT	PLT	PLT
-----	-----	-----	-----

PLT • Side A Panel

• Optional Tier I & II colors

PLT • Side B Panel

• Optional Tier I & II colors

PLT • Panel Frame

• Optional Tier I & II colors

LAX • Deck Top Covering (S-Style Base Deck only)

• Optional Tier I & II laminates

PLT • Deck/Frame/Leg

• Optional Tier I & II colors

MA1 • Insert (Framed Base only)

• Optional Tier I & II laminates

• Optional MA1, MA5, & MB5 melamine



2-WAY MERCHANDISER

2-Way Wire Wing Panel

- 23 3/4"W x 5"D
- Mounts centered on 2-Way Frame
- No loose hardware
- Accepts Wire Wing Panel Hooks (pg. 308)
- Carton Rounding: 2

EXAMPLE PART NO.

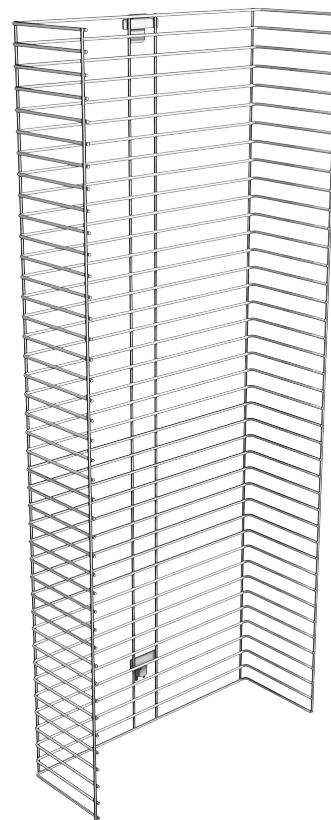
2W	WWP	54	2
----	-----	----	---

2W = 2-Way
WWP = Wire Wing Panel
54 = Height: 48" or 54"
2 = Width: 2'

STANDARD FINISH:

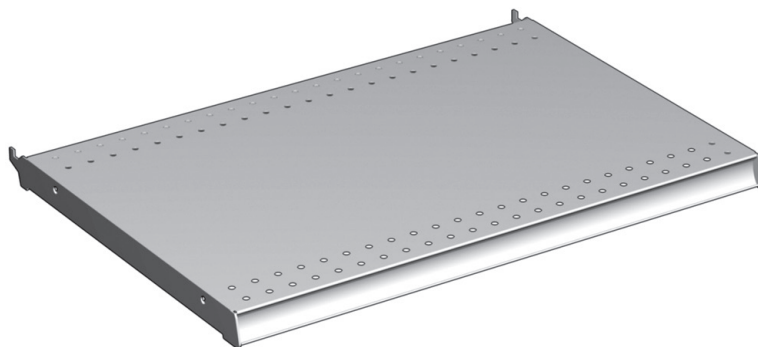
PLT

- Optional QP3 (Powder Chrome)
- Optional Tier I & II colors



2-Way S-Series Base Deck

- Can be retro-fitted to No Base 2 Way Merchandiser
- 1/4" perforations for clip on accessories
- Aluminum tag molding can be ordered installed
- Available painted or laminated
- Laminate covered Deck must include MR1 molding



EXAMPLE PART NO.

2W	SD	2	10	N
----	----	---	----	---

2W = 2-Way
SD = S-Series Base Deck
2 = Width: 2', 30", 3', or 4'
10 = Depth: 10", 13", or 16"
N = No Aluminum Molding

- Molding: M13_, M35_, MR1_ (laminated only)
- Specify "S" Satin or "G" Gold

STANDARD FINISH: (M13, M35, N)

PLT

- Optional Tier I & II colors

STANDARD FINISH: (MR1)

LAX PLT

- LAX • Top Covering
- Optional Tier I & II laminates
- PLT • Deck
- Optional Tier I & II colors