

Apparel Unit

- Order Quantity Restrictions Apply

Apparel Unit Upright with Welded T-Leg:

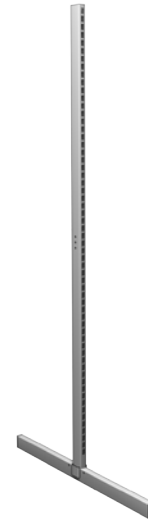
- 1x2 tube construction
- Integrated "pocket" at bottom of upright to accept the back panel assembly
- Standard Lozier slotting to accept all Lozier accessories

HEIGHT	OVERALL DEPTH	PART NO.
67"	31"	CDC1471
50"	31"	CDC1472

STANDARD FINISH:

PLT

- Optional Tier I & II colors



Apparel Unit Wiregrid Back Panel Assembly:

- Welded Panel assembly with integrated lower "flange" which installs in the lower "pocket" on the upright
- Secures with hardware to the upright
- Assembly includes a front and back Wiregrid Back Panel with 3"x6" wire spacing

WIDTH	HEIGHT	PART NO.
24"	67"	EFC4681
24"	50"	EFC4682

STANDARD FINISH:

PLT

- Optional Tier I & II colors



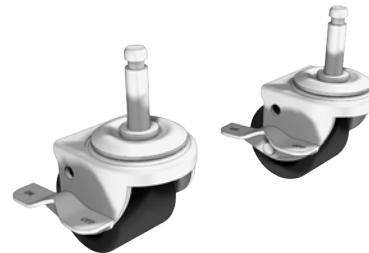
Caster Hardware Kit:

- Includes:
 - 2 - 2" Locking Swivel Casters
 - 10 - screws
- Order 1 Caster Hardware Kit per Upright

PART NO.
HMA8561

STANDARD FINISH:

N/A



Apparel Unit

- Order Quantity Restrictions Apply

Apparel Unit Wiregrid End Frame:

- Welded frame includes:
 - 1 - 3"x6" wiregrid back centered
 - Integrated front and rear graphic channels

WIDTH	HEIGHT	PART NO.
24"	67"	EFC4691
24"	50"	EFC4692

STANDARD FINISH:

PLT

- Optional Tier I & II colors



End Frame Sign Topper:

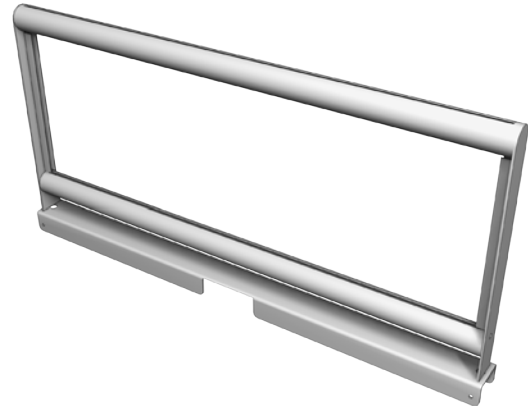
- Open welded sign frame installs on top of the Wiregrid End Frame
- Includes a graphic channel centered in frame
- Secures to Wiregrid End Frame with thumbscrew
- Accepts 22 3/16"W x 6 3/4" H x 7/32" thick sign material (assume 5/8" horizontal margins and 3/16" vertical margins)

WIDTH	HEIGHT	PART NO.
24"	8"	DF5391

STANDARD FINISH:

PLT

- Optional Tier I & II colors



End Frame Top Channel:

- Required if not using End Frame Sign Topper
- Order 1 per Wiregrid End Frame

WIDTH	PART NO.
24"	DAA6351

STANDARD FINISH:

PLT

- Optional Tier I & II colors

