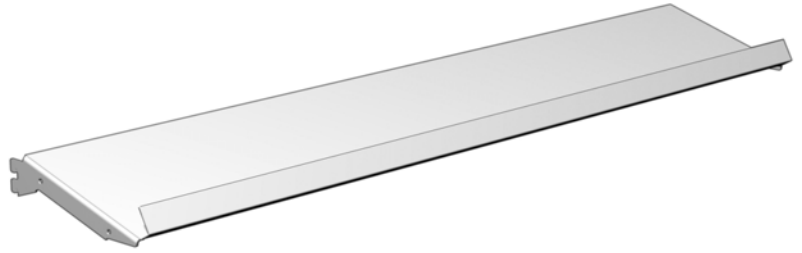


Candy Shelf

Candy Shelf:

- Light duty steel shelf
- Fixed 15 degree downslant
- Integrated 1 1/2" angled lip
- Uniformly distributed load of 50 lbs



WIDTH	DEPTH	PART NO.
48"	7"	SLA8903
36"	7"	SLA8904
48"	10"	SLA8901
36"	10"	SLA8902

STANDARD FINISH:

PLT

- Optional Tier I & II colors