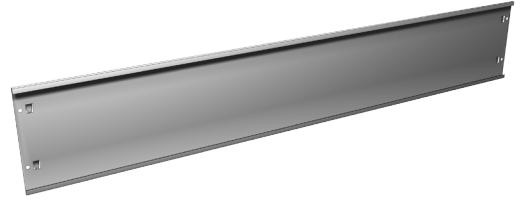


Canopy Mount Sign Holder



Metal Fascia Sign Holder:

- 7"H Metal Fascia
- Accepts up to 7/32" thick sign material

LENGTH	SIGN MATERIAL SIZE	PART NO.
96"	95 31/32" L x 6 13/16" H	CA8856
48"	47 31/32" L x 6 13/16" H	CA8854
36"	35 31/32" L x 6 13/16" H	CA8852

STANDARD FINISH:

PLT

- Optional Tier I & II colors

Metal Fascia Shelf Mount Bracket

- Accepts 7"H Metal Fascia Sign Holder
- Two brackets required for 36" and 48" Fascia
- Three brackets required for 96" Fascia
- Install on standard Lozier Drop-In and Tilt-In shelves

HEIGHT	PART NO.
7"	CA8861

STANDARD FINISH:

PLT

- Optional Tier I & II colors

