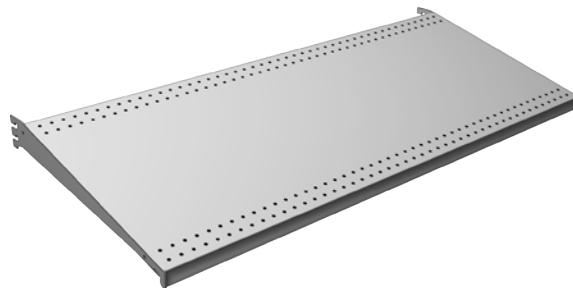


# Gravity Shelf, Carton Feed System

## Gravity Shelf

- Drop in shelf with a 14° downslant position
- Load capacity 300 lbs., front loaded



WIDTH	DEPTH	PART NO.
48"	16"	SLA8366
48"	19"	SLA8365
48"	22"	SLA8364
48"	25"	SLA8361
48"	28"	SLA8362
48"	31"	SLA8363

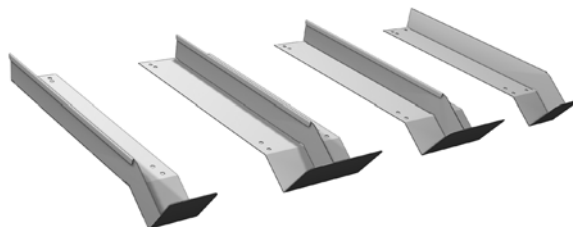
STANDARD FINISH:

**PLT**

- Optional Tier I & II colors

## Gravity Shelf Dividers:

- Dividers available in three styles:
  - Left Hand
  - Right Hand
  - Center
- 48W shelf will accommodate 3-Refrigerator Pack facings which would require: 1 LH Divider, 1 RH Divider, 2 Center Dividers



STANDARD FINISH:

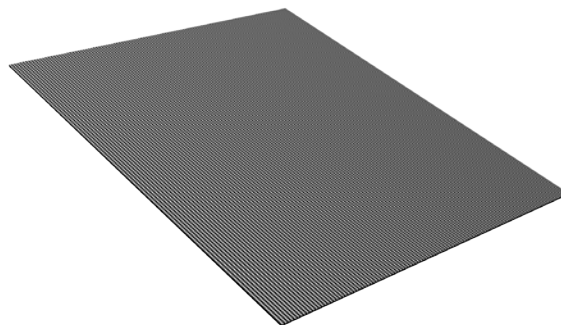
**PLT**

- Optional Tier I & II colors

	16"	19"	22"	25"	28"	31"
LEFT-HAND	HS8516	HS8515	HS8514	HS8511	HS8512	HS8513
RIGHT-HAND	HS8486	HS8485	HS8484	HS8481	HS8482	HS8483
CENTER	HS8496	HS8495	HS8494	HS8491	HS8492	HS8493

## Gravity Shelf Mat:

- Silicone impregnated surface mat reduces friction and aids self feeding
- One mat required per refrigerator pack facing



WIDTH	DEPTH	PART NO.
16"	16"	DAA6082
16"	19"	DAA6083
16"	22"	DAA6081
16"	25"	DAA6084
16"	28"	DAA6085
16"	31"	DAA6086

STANDARD FINISH:

**XG9**