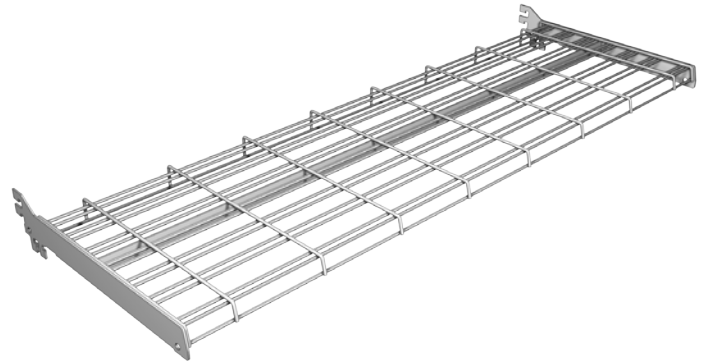


# Flip Shelves

## Slotgrid Flip Shelf:

- Installs in 2 positions
  - Flat-used as light duty shelf
  - Vertically-used as a wire panel
- Accepts wiregrid & slotwall hooks and face-out arms



| WIDTH | DEPTH | PART NO. |
|-------|-------|----------|
| 48"   | 13"   | SM7387   |
| 48"   | 16"   | SM7386   |
| 48"   | 19"   | SM7383   |
| 48"   | 22"   | SM73818  |
| 36"   | 13"   | SM73813  |
| 36"   | 16"   | SM7387   |
| 36"   | 19"   | SM73812  |
| 36"   | 22"   | SM73820  |

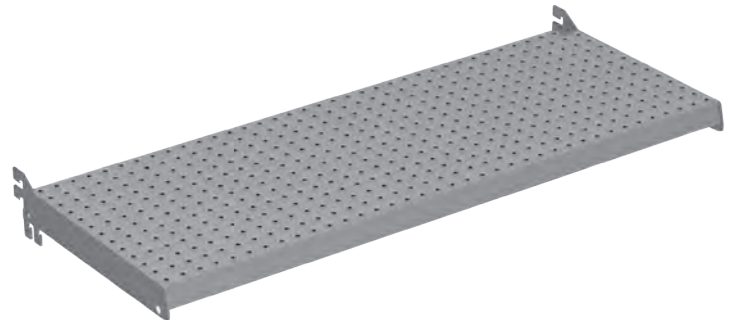
### STANDARD FINISH:

PLT

- Optional Tier I & II colors

## Metal Pegboard Flip Shelf:

- Installs in 2 positions
  - Flat-used as light duty shelf
  - Vertically-used as a pegable panel
- Accepts standard Peg Hooks



| WIDTH | DEPTH | PART NO. |
|-------|-------|----------|
| 48"   | 19"   | SLA6042  |
| 36"   | 19"   | SLA6044  |

### STANDARD FINISH:

PLT

- Optional Tier I & II colors