

Pegboard Mount Tilt Bin and Hardware

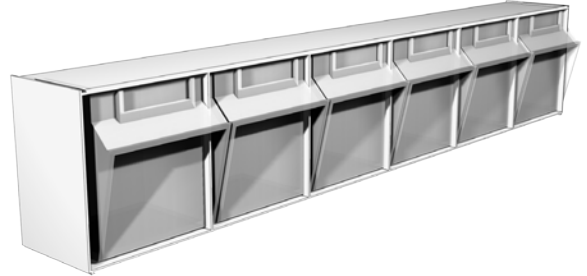
Pegboard Mount Tilt Bin:

- 6 compartments per unit
- Mounts to pegboard with hardware (sold separately)

WIDTH	# OF BINS	PART NO.
24"	6	SPTB206

STANDARD FINISH:

- XM4 - Almond
- XG9 - White
- XG5 - Gray



Sliding Panel Tilt Bin Hardware:

- 1 hardware pack includes:
 - 1 - Bolt
 - 2 - Washers
 - 1 - Wingnut
 - 1 - Installation Instruction
- Order 2 hardware packs per Tilt Bin

PART NO.
DAA6231

STANDARD FINISH:

N/A