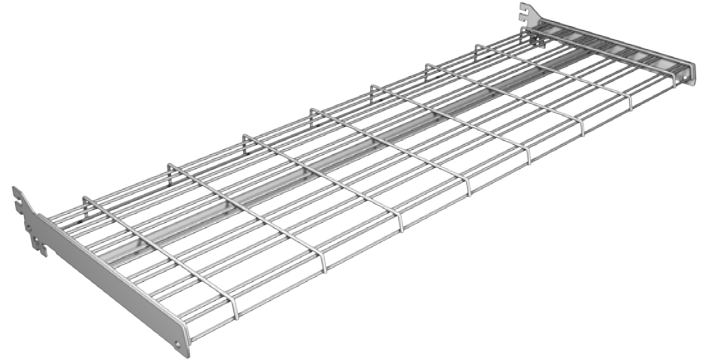


Flip Shelves

Slotgrid Flip Shelf:

- Installs in 2 positions
 - Flat-used as light duty shelf
 - Vertically-used as a wire panel
- Accepts wiregrid & slotwall hooks and face-out arms



WIDTH	DEPTH	PART NO.
48"	13"	SM7387
48"	16"	SM7386
48"	19"	SM7383
48"	22"	SM73818
36"	13"	SM73813
36"	16"	SM7387
36"	19"	SM73812
36"	22"	SM73820

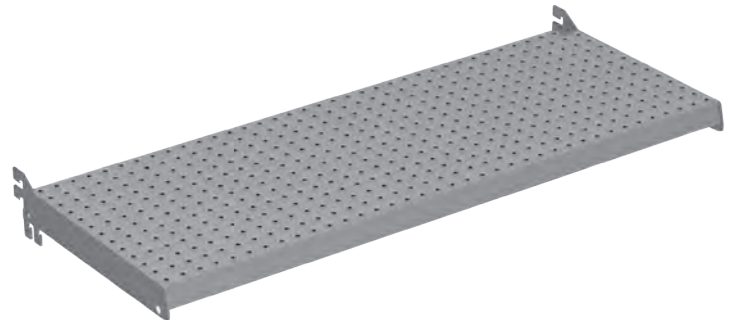
STANDARD FINISH:

PLT

- Optional Tier I & II colors

Metal Pegboard Flip Shelf:

- Installs in 2 positions
 - Flat-used as light duty shelf
 - Vertically-used as a pegable panel
- Accepts standard Peg Hooks



WIDTH	DEPTH	PART NO.
48"	19"	SLA6042
36"	19"	SLA6044

STANDARD FINISH:

PLT

- Optional Tier I & II colors