

Wire Wing Panel Accessories

Wire Wing Panel Wire Shelf:

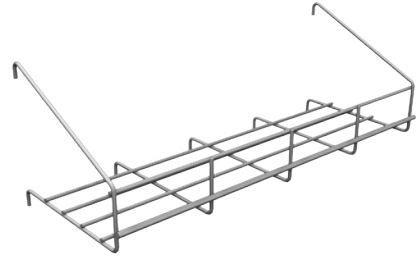
- 3 1/4" wire spacing
- 2" H up-lip

WIDTH	DEPTH	PART NO.
13"	5"	WWPS130502

STANDARD FINISH:

PLT

- Optional Tier I & II colors



Wire Wing Panel Steel Shelf:

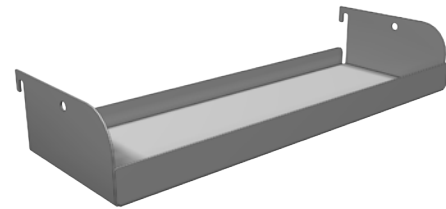
- 1" up-lip

WIDTH	DEPTH	PART NO.
13"	5"	WPS1351N

STANDARD FINISH:

PLT

- Optional Tier I & II colors



Wire Wing Panel Vertical Sign Channel:

- Installs on standard Wire Wing Panel-no hardware required
- Accepts 48 1/8H x 4 5/8W x .030 thick sign material

HEIGHT	WIDTH	PART NO.
48"	5"	DF4991

STANDARD FINISH:

PLT

- Optional Tier I & II colors

